

INFORMATION PACKET



GEORGIA LINEMAN'S RODEO

FFA – CAMP JOHN HOPE

FORT VALLEY GEORGIA – MAY 2, 2015



RODEO INFORMATION

The Twenty-First Annual Georgia Lineman's Rodeo Competition will be held on May 2, 2015 at the **Camp John Hope**-281 Hope Entrance Rd – Fort Valley, GA 31030. Teams will compete in two divisions: EMC and Electric Cities.

On Saturday following the Rodeo, there will be an awards presentation at the Camp John Hope Banquet Hall.

Awards will be given to:

- First, second, and third place teams in each division.
- First, second, third, fourth, and fifth place teams overall.
- First, second, and third place teams for events, per division.
- First, second, third, fourth, and fifth place overall apprentice lineman.
- First, second and third place apprentice lineman in each division.
- First, second and third place apprentice lineman for events, per division.

Judges representing each division will judge the rodeo events. Rodeo teams consist of three members: two climbers and a ground person. They may also have a coach if desired. Climbers must be a Journeyman Lineman or meet the qualifications established by the International Lineman's Rodeo Committee. An Apprentice Lineman who has competed as an apprentice for four years or more cannot compete in the Apprentice events. After four years of Rodeo competition as an Apprentice, the Apprentice must compete on a Journeyman team.

A Lineman can be the Groundman, but must be designated as the Groundman for the Rodeo. Please contact your division rodeo coordinator for further information.

This packet is intended as an informational resource to answer commonly asked questions about the Lineman's Rodeo. It contains specification pages that may be used to build a practice line. It contains information sheets for each announced event in the Rodeo. Included is a list of common infractions for all events that judges look for.

At Camp John Hope - Registration will be Friday May 1st with Competition Saturday (8:00-12:00) May 2nd. All Apprentices and Teams must register. **All participants shall have a picture ID for registration.** All three Team members must register together.

Teams and Apprentices must have their own tools; handlines, hose bags, hand tools, wire brushes and tarp. Teams that might be sharing some major items must register together and let someone know at registration to avoid being scheduled for the same event together. The schedule will be drawn prior to registration.

Each Team is **required to supply at least one judge** per team for the rodeo.

One judge is required for every three apprentices that are from one utility.

Please see Judges Registration Form for additional information.

Required Judges Meeting will be Friday, May 1st from 2:00-4:00 pm at the FFA banquet auditorium.

All poles for the rodeo will be Penta-treated 40' class 4, unless otherwise noted on event description sheet.

Apprentice Lineman will need rubber gloves for this Rodeo.

To enter the Rodeo and register your teams, please send your registration forms and check to GLRA at:

**GLRA
6077 Middleground Road
Louisville, GA 30434**

Please attempt to have registration submitted before April 13th, 2015 to allow for ordering of supplies and materials.

You are responsible for making your own hotel reservations. GLRA will not be blocking rooms.

There will be a special vendor show on Friday, May 1st and Saturday May 2, 2015 at the FFA Camp. Vendors will be displaying the latest tools and equipment pertinent to Electric Utility Linemen.

Friday- May 1st: Vendor Show/Registration for competitors/Judges Meeting.

Saturday- May 2nd: Competition & Vendor Show/Luncheon/ Awards Banquet.

*** Detailed Agenda with times will be posted on the web-site at www.garodeo.com

The TARGET date for **Rodeo field construction** has been set for **Tuesday, March 17, 2015**. (Alternate date is Tuesday, March 24, 2015). All Rodeo teams are encouraged to help with the initial construction of the field on this day. Please contact **Tony Jordan at 770-359-7115** or email Tony.jordan@cobbemc.com to coordinate your help in constructing the rodeo field.

Please do not grill on the Rodeo Field during the rodeo on Saturday. The smoke could be a distraction for the teams competing. Thanks for your cooperation in this matter.

Camp John Hope is a state run facility, **so no alcoholic beverages are allowed at the GLRA awards banquet.**

Note: All events at the Georgia Lineman's Rodeo are for competition purposes only and in no way should be taken as to what a Journeyman Team or an Apprentice should or should not do at their own company.

Event Cancellation Policy

The Georgia Lineman's Rodeo is sponsored and coordinated through the Georgia Lineman's Rodeo Association. GLRA is a non-profit organization that relies on participant entry fees, exhibitor sponsorships, and meal, shirt and hat orders to finance the Rodeo. Many of the expenses incurred are non-refundable to GLRA.

The Georgia Lineman's Rodeo will be cancelled in the event of prolonged Lightning, Tornados or other severe weather during the scheduled day of the Rodeo that make it impossible for safe participation. Furthermore, the Rodeo will be cancelled in the event of widespread power outages that require a **majority** of the Rodeo participants and judges to return to work.

In the event of cancellation, there will be no refunds for entry fees, sponsorships, food and/or merchandise orders. Shirts and hats that were preordered and paid for will be delivered at a later date.

The decision to cancel the Rodeo due to weather related issues will be made by the Georgia Lineman's Rodeo Association Board of Directors and communicated by every means possible.

RODEO

JUDGE'S SCORING INFORMATION

The GLRA Events Committee sets forth the guidelines listed on the following pages. Each event is worth a total of 100 points.

Bonus points will **Not** be awarded in the 2015 GLRA Rodeo. Places for events will be determined by combination of highest score and fastest time.

JUDGING IS BASED UPON:

- * **Safety**
- * **Work Practices**
- * **Neatness and Ability**
- * **Equipment Handling**
- * **Timely Completion of Event**

- Time will be used as a tiebreaker only.
- Total number of events for each team = 4.
- All Safety rules are to be observed during events.
- Rubber gloves ground to ground for all pole events unless otherwise stated in event description.
- **All material sent up and down the pole will be hooked on the handline hook or inside a material bag.**
- Safety glasses are required for all events.
- Ground man must wear work gloves.
- Hard hats must be worn properly during all events.
- Long sleeve shirts are required.
- **A tool inspection will be conducted to check for safe condition and for alterations of tools such as: tapered cuts on straps, elongated holes in straps & belts, tape on straps, improper gaff length, buckles filed.**

JUDGING GUIDELINES

All safety rules are to be observed during events.

INFRACTIONS -2- POINT DEDUCTION

1. Loss of hard hat.
2. Not wearing safety glasses.
3. No rubber on reach, fall, or slip.
4. Dropping tools.
5. Cutout with loss of control.
6. Hot-dogging.
7. Hand line operation while team is climbing.
8. Misuse of tools.
9. Wearing hard hat backwards.
10. Twisted hand line operation.
11. Not wearing OSHA approved lineman's belt.
12. Poor housekeeping (Tools and material must be kept on tarp).
13. Exceeding the mean time to complete an event.
14. If the event mean time is exceeded by more than 2 minutes the team will be stopped and be deducted 2 additional points. Timing will continue until the event is returned to normal and both linemen are back on the ground.
15. Not wearing work gloves.
16. Pushed or rolled up shirt sleeves.
17. Being late for an event. **Once an event is completed, teams and apprentices will be given 30 minutes to arrive at their next event. Teams and apprentices will be given one 1-hour lunch break.**
18. Failure to perform an event on schedule unless approved by Master Judge.
19. ***Using unsafe tools in any event.***
20. ***IMPROPER ADJUSTMENT ON FALL RESTRAINT WHILE CLIMBING OR IN A WORKING POSITION.***

GENERAL RULES - 10 POINT DEDUCTION

1. Cut out and fall to the ground.
2. Accidental contact with energized phases.
3. Working opposite energized phases.
4. Insulators being broken during an event.
5. Not using hand line or material bag for sending material up and down the pole.
6. **Ascending or descending the pole while other climber is working or un-safetied.**
7. **FALL RESTRAINT/PROTECTION MUST BE USED IN THE 2015 GEORGIA LINEMANS RODEO.**

DISQUALIFICATION

1. Unprofessional behavior.
2. Practicing on the Rodeo field prior to the Rodeo.
3. Tampering with materials, tools or equipment on the Rodeo Field.
4. **Unapproved use** of alternates or changing status of team members during the events. See Master Judges for approved use of alternates or change in team status during Rodeo.
5. Teams and Apprentices must attempt all events to be eligible to win an event with the exception of a Team or Apprentice being injured the day of the rodeo. Final determination for a Team or Apprentice to win, that did not attempt all events, will be made by the Events committee.

RULES FOR PROTEST

1. Protests must be submitted to the Chief Judge **BEFORE** the competitor exits the event.
2. Protest must be made on the **official protest form** to the Chief Judge for that event and resolved before leaving event location. (Protest forms will be at each event)
3. If the Chief Judge denies the protest, an additional two-point deduction will be applied to the score on that event.
4. Protest may be appealed to the Master Judges. If the Master Judges rule in favor of the team/apprentice the two point deduction for the protest will be removed. However, if the Master Judges uphold the decision of the Chief Judge the two-point deduction will remain and an additional two-point deduction will be applied.

General Judging Guidelines

- Teams and apprentices will have a **5 minute set-up time to prepare tools and also ask any questions they may have for the judge**. If the team or apprentice is not ready at the end of the 5 minute set-up time, the event time will begin.
- Climbers may assist each other with safety straps while re-positioning (1 or 2 steps) only.
- Blanket pins, small material (clamps, tie wire etc.) and small hand tools may be carried up in the lineman's ditty bag (no insulators, big bolts or items that may be dropped and injure someone) **unless otherwise noted on individual events**.
- The 1st climber must carry the handline, one climber must descend the pole to the ground before the handline is dropped and the climber who drops the handline must signal the groundman (yell "headache") before dropping the block.
- The handline may be placed just above the neutral clevis before the neutral is covered, however the climber shall not contact the **uncovered** neutral with **unprotected** parts of the body.
- All tools and material must be sent up and down with handline or drop line.
- It is permissible to drop a tag line to the ground from the pole, as long as the climber signals the groundman.
- It is permissible to lower rope blocks to the ground with its own rope.
- Material or tool bags may be suspended or hooked onto the bottom of the handline block.
- Brush/incidental contact of a **covered** neutral with **unprotected** parts of the body is **not** a deduction.
- Brush/incidental contact of a **covered** primary with **unprotected** parts of the body is a deduction.
- Hot Sticking Events; the climber **cannot** encroach inside the minimum approach distance on the hot stick with rubber gloves.
- Climbers **cannot** encroach inside the minimum approach distance (26 inches) of uncovered primaries that are not being worked with unprotected parts of the body, whether it be sticking or gloving events. The only permissible encroachment is with rubber gloves.
- Working opposite energized phases at the same time is not allowed, whether it is with sticks or gloves.
- Climbers **shall not** work on the ground with their climbing tools on. **Climbing tools are defined by the Event Committee as HOOKS/CLIMBERS ONLY. Body belts are not considered climbing tools.**
- Gaffs must be protected with gaff guards outside the 10 ft. circle.
- If material or tools come off the tarp and the groundman places it back on within 10 seconds, this is not a deduction.
- It is permissible for the handline and ropes to come off the tarp and remain there.
- All Team members and Apprentices must wear work gloves while working on the ground.
- The Team or Apprentice should check the working condition of all material and tools provided during the set- up time.
- The Groundman cannot work directly under a climber who is ascending or descending the pole.
- The Groundman cannot stand under a suspended load such as a crossarm.

- Material and tool bags cannot be loaded before time starts, bags do not have to be unloaded before time stops. (Must be unloaded before leaving event site)
- A climber may assist the Groundman pulling rope blocks, or a handline for raising or lowering heavy material.
- Every electrical connection must be wire brushed unless otherwise noted.
- The tie wire can be cut in the set-up time.
- The tie wire cannot be made up in the set-up time.
- Homemade devices used to hold primary cover upright are allowed, but **must** be 10 ft. from the pole and subject to Chief Judge's discretion.
- Insulation shavings falling from the pole are not a deduction.
- Channel locks may be used as a holding tool only.
- **No ascending or descending the pole while other climber is un-safetied, working, or if handline is in operation.**
- When an event begins and ends with both climbers or the Apprentice back on the ground, the following will apply: Event times will start when the first climber's gaff is placed into the pole to begin their climb. Event time will stop when the last man down has one foot on the ground (earth).
- **In the event a Team or an Apprentice uses full fall arrest or the hitch-hike method, the fall arrest/safety can be placed around the pole prior to time starting.** Time will also start when the first climber's gaff is placed into the pole, and time will stop when the last man down has one foot on the ground (earth). However, the fall arrest/safety does **not** have to be removed from around the pole for time to stop.

JOURNEYMEN EVENTS

Four Competition Events

- 1. Hurtman Rescue**
- 2. Cap Bank Change (12 KV)**
- 3. Insulator Hot Tie Change (12KV)**
- 4. Mystery Event**

APPRENTICE EVENTS

Four Competition Events

- 1. Written Test**
- 2. Hurtman Rescue**
- 3. Inline Switch Change**
- 4. Mystery Event**

**THE 2015 GEORGIA LINEMANS RODEO IS A MANDATORY FALL
RESTRAINT/PROTECTION RODEO**

JOURNEYMAN EVENT #1 – 2015

Hurtman Rescue

Mean Time: 4 minutes

This team event will be run one time with all three team members participating to rescue the hurtman. Teams have 5 minutes to set up and ask questions. The switch (cutout) feeding the transformer must be opened before the climber can step onto the pole. It will be opened from the ground using an extendo stick and rubber gloves. The stick must be off the ground and the body anytime it is touching anything energized. The climber must wear rubber gloves ground to ground. Lineman will split handline and loop bottom part of handline around mannequin's legs. Then take the top part and wrap around the pole a minimum of one and a half wraps, take the rope under mannequin's arms and tie three half hitches (the splice cannot be part of the knot). The mannequin can then be lowered to the ground while the third member of the team uses the bottom part of handline tied to the mannequin's legs to pull mannequin on to the tarp. You must attempt to keep the mannequin off the pole and hardware. There will be **NO** gigs for incidental contact of the mannequin on the pole or neutral. The mannequin must land with all of his body on the tarp provided, and he must hit the ground gently as if a real person. Teams will provide their own tarp and place it 5' from pole centered under switch. **This event must be completed with the climber and mannequin in fall restraint.**

Event Specifications

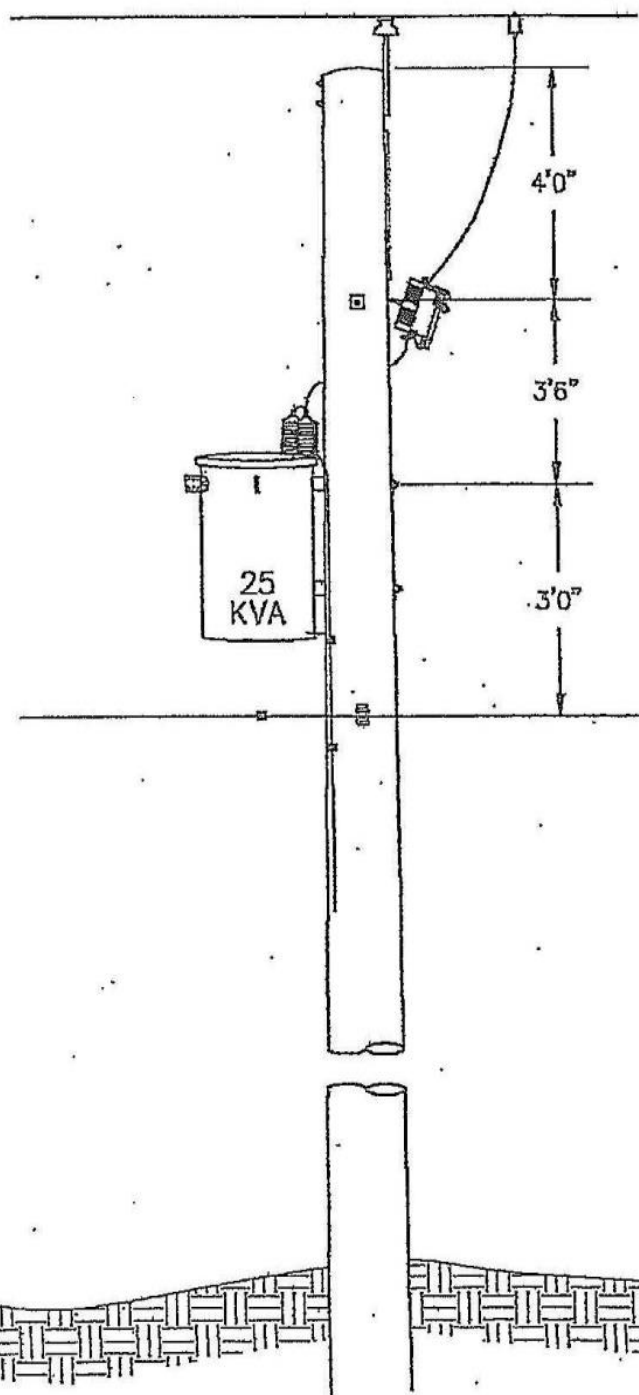
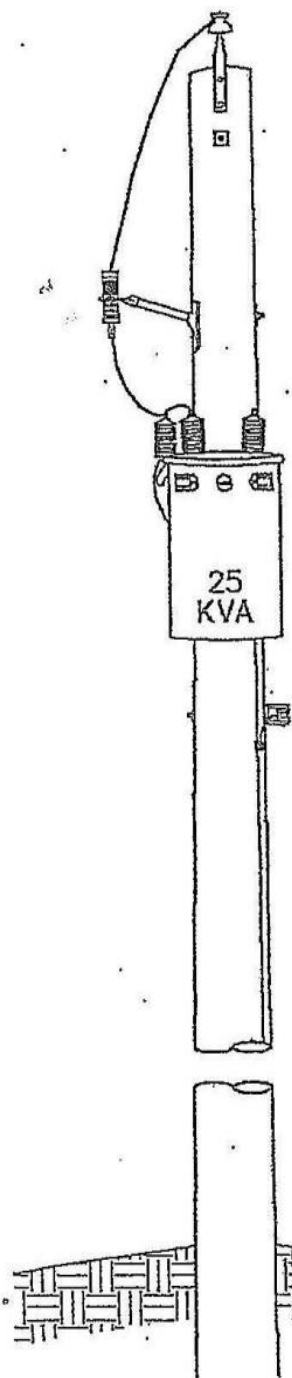
- Time starts at judges signal with all team members at least an arm's length from pole and extendo stick.
- All rubber gloves will be in glove bag cuffs down with no fingers protruding.
- Lineman's belt and hooks will be on the ground opposite the switch side of the pole.
- Extendo stick will be lying flat at on tarp fully retracted.
- All three team members must be used.
- One must climb, one must open switch, and one must tag the mannequin.
- Time will stop when mannequin is on the tarp with slack on the handline and extendo stick is fully retracted and back on tarp.
- Climber will stay on pole and help hang mannequin.
- Team will close switch back after time stops. Any team member can close it back and work gloves can be used.
- You must use the eye to open and close switch.
- When time starts extendo stick will be lying flat on tarp and must be back on tarp fully retracted before time will stop.
- Rubber gloves or work gloves must be worn anytime you are working or handling tools and equipment.
- The blade of the climber's knife must not be exposed while climbing.
- Judges will use a 4" PVC conduit between the rope and the mannequin to evaluate the rope knot, the eye splice cannot be in any part of the knot.

- You may use any standard knot or hitch on the mannequin's legs that can be easily removed. (including placing the rope through the hook, but it must not come off)
- We will be using ox block this year (Check cut sheet).
- The ox block can be used as designed.

Teams will provide their own:

- Extendo Stick
- Tarp

- **Mannequin will hang from the top hanger of the transformer under the T-bracket.**



Buckingham Mfg. Co., Inc.

OX BLOCK™ EASE THE LOAD



OVERVIEW

The new Buckingham OX BLOCK™ is a rope snatch block with an integrated friction bar used for hurt man rescue, lowering loads, snubbing loads, and raising loads. It allows the rigging professional to handle loads with greater control. When lowering loads, tension is transferred from the worker to the OX BLOCK™. The OX BLOCK™ replaces standard handline blocks, parted blocks, and various snatch blocks. The OX BLOCK™ also has greater Working Load Limits than blocks of similar size.

MODEL 50061
PATENT PENDING



WLL Eye to Sheave: 2500 lbs.
WLL Eye to Friction Bar: 1500



MODEL 50061A-4



Model 50061A-4: OX BLOCK™ with an attached 4' x 5/8" adjustable sling and a steel carabiner.

Model 50061A-7: OX BLOCK™ with an attached 7' x 5/8" adjustable sling and a steel carabiner.

Model 50061B: OX BLOCK™ only with 2 steel carabiners.

WATCH THE VIDEO



www.buckinghammfg.com/OX

MODEL 50061A-4/80

The OX Block™ Handline Assembly with an attached 4' x 5/8" adjustable sling, a steel carabiner and an 80' x 1/2" handline assembly.

The OX Block™ handline assembly, as a whole, can be used during pole top rescue. However, DO NOT USE P/N 2406 handline hook [MBS 500 lbs.] or handline snap [MBS 750 lbs.] for human support. All components used for rescue must have a 5000 lb. rating, configured to accept human support. For rigging, ensure the weak link has a 5 to 1 safety factor.

Model 50061A-4/80: OX BLOCK™ with an attached 4' x 5/8" adjustable sling, a steel carabiner and an 80' x 1/2" handline assembly.*

Model 50061A-4/100: OX BLOCK™ with an attached 4' x 5/8" adjustable sling, a steel carabiner and an 100' x 1/2" handline assembly.*

Model 50061A-7/80: OX BLOCK™ with an attached 7' x 5/8" adjustable sling, a steel carabiner and an 80' x 1/2" handline assembly.*

Model 50061A-7/100: OX BLOCK™ with an attached 7' x 5/8" adjustable sling, a steel carabiner and an 100' x 1/2" handline assembly.*



www.buckinghammfg.com
1-800-YES-BUCK (937-2825)
MADE IN THE U.S.A.

Buckingham Mfg. Co.

PN 488PR – SuperSqueeze Rescue Trainer (with replacement rope) Instructions / Warnings

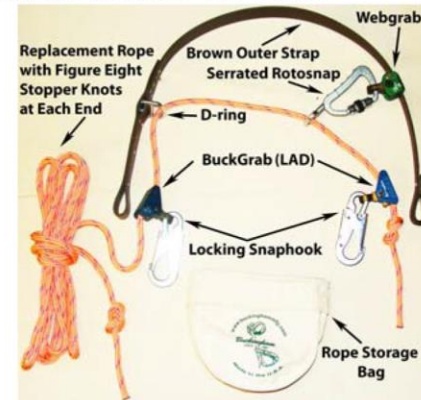
This device is intended for Rescue Training only. It is **not** intended for human support. This device is only to be used with the Buckingham Rescue Buck PN 694 or similar devices, (Fig. 2 or 3) never with a human.

Read and understand these instructions, warnings, and all labels attached to and packed with this product. 488 Series SuperSqueeze instructions must be used in conjunction with the instructions outlined below. If an additional copy is required, you may obtain one from the Buckingham website (www.buckinghammfg.com) or by contacting Buckingham Customer Service at 1-800-937-2825.

ATTACHMENT (Reference the 488 SuperSqueeze Instructions):

1. Attach each locking snaphook of the SuperSqueeze Rescue Trainer to the D-ring of the Linemens body belt (Ref. Fig. 3) (Ensure that a figure eight stopper knot is tied at each end of the rope (Fig. 1)).
2. Attach the rope storage bag/ excess rope to the side of the Rescue Buck nearest the D-ring of the SuperSqueeze Rescue Trainer (Fig. 1).
3. Ensure the area on the ground below the Rescue Buck is clear and raise it to the desired height.
4. Attach the SuperSqueeze Rescue Trainer to the pole and properly adjust (i.e. the same as that outlined for the SuperSqueeze).

PN 488PR
SuperSqueeze
Rescue
Trainer
Fig. 1



Note: Ensure rope is properly threaded into the BuckGrabs (LAD)(Ref. Fig. 4 or 5), the arrows shown on its body face towards the pole and the attached snaphook gates face outward (see Fig. 4a -5b)

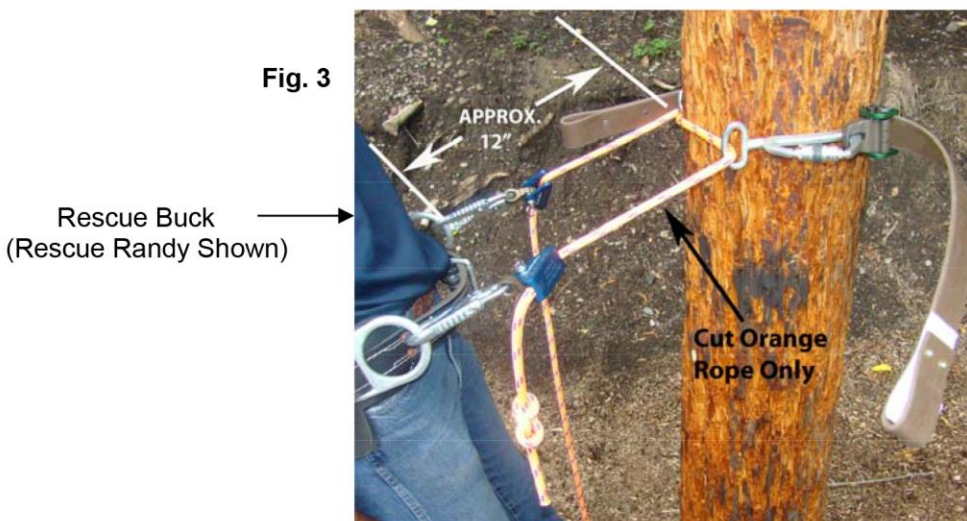
RESCUE:

1. Ensure the area on the ground below the suspended Rescue Buck is cleared and secured (Never stand under a suspended object).
2. Properly attach a secondary suspension device and or lowering device to the Rescue Buck. Ensure all slack is removed from the secondary suspension device.
3. Cut the **Orange Rope Only** on the SuperSqueeze Rescue Trainer as shown in Fig. 3. Note: once rope is cut, the Brown Outer Strap will fall from the pole and to the ground below it.
4. Lower the Rescue Buck to the ground and resume rescue training exercise.

Fig. 2



Fig. 3

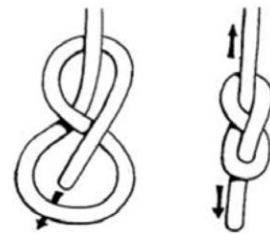
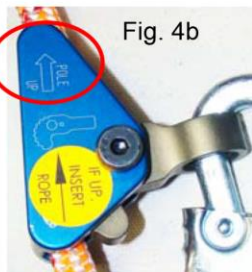
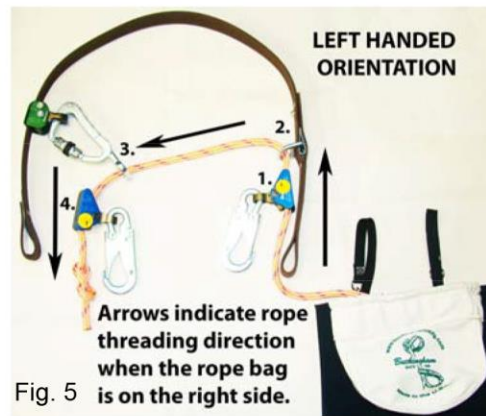
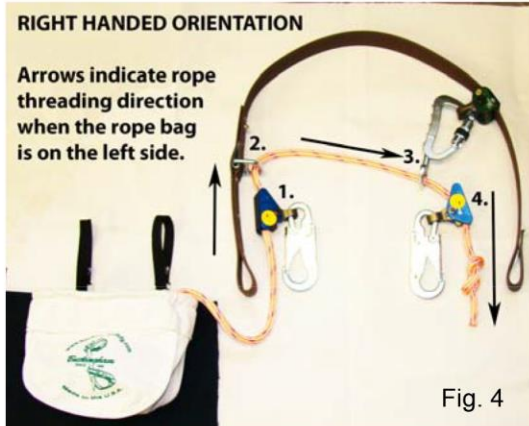


Scan to view Ox Block Pole
Top Rescue Video

REPLACEMENT ROPE CHANGE OUT: (Replacement Rope for Use With This Product Must Only Be That Supplied By Buckingham Mfg. Co. Use PN 488AR series only). Alternate diameter or rope types have not been tested to ensure they properly function with this device and may allow the rescue device to unexpectedly fall from the pole.

- The SuperSqueeze Rescue Trainer can be used in either a right or left hand orientation. However for proper rope replacement / rethreading, the rope bag must be placed on the same side of the Rescue Trainer as the D-ring (Fig. 4 right handed orientation), (Fig. 5 left handed orientation).

- When training is complete (rope has been cut) remove the cut rope section from the BuckGrabs (LAD).
- Tape the cut end of the rope to prevent it from unraveling when feeding through the BuckGrab (LAD).
- Properly feed the cut end of the rope through all applicable hardware (Fig. 4 or 5) and in the same direction as the arrows on the rope threading decals (Fig. 4a - 5b as applicable).
- To re-thread complete unit with replacement rope, follow the rope threading decal arrows and feed new rope through 1. BuckGrab (LAD), 2. D-ring, 3. Serrated Rotosnap stirrup and 4. 2nd. BuckGrab (LAD) as shown in Fig. 4 or 5. Ensure the BuckGrabs (LAD) are properly oriented with the arrow on the body facing towards the pole (Fig. 4b & 5b) and snap hooks gates face outward (Fig. 4 & 5).
- Ensure a figure eight stopper knot is tied at each end of the rope (Fig. 4, 5 & 6).



WARNINGS:

- Completely read, understand, and follow all instructions, warnings, and guidelines pertaining to this and all associated equipment before use. Failure to do so could result in serious injury or death.
- This equipment is intended for use by properly trained professionals only.
- It is the users responsibility to ensure that they are properly trained in the use, care, and limitations of this product.
- This device is intended to be used for rescue training only. It is not intended for any other purpose.
- Never disconnect hardware while suspended without a secondary means of support.
- Prior to use visually check the Orange Rope to ensure it is free from cuts from previous trainings and is properly threaded through all applicable hardware as shown above.
- Ensure the ground below the area of intended rescue training is clear and secured.
- Only Buckingham Mfg. Co. or those people authorized in writing by Buckingham Mfg. may make repairs to this equipment.
- Product covered under these instructions / warnings should not be resold / redistributed or re-used after use by original user.

INSPECTION : Inspect prior to each use, inspection should include but not be limited to the following:

1. All hardware and connecting devices are clean, functioning properly, free of cracks, deformation, burrs, excessive wear, or modifications. Also that:
 - Snaphooks meet the criteria outlined on the Locking Snaphook Inspection Procedure (located on the last page of this document).
 - BuckGrabs (LAD) are properly attached, in the correct orientation and rope is properly threaded.
2. All straps / ropes are free from kinks, knots, cuts, cracks, burns, abrasions, broken strands, excessive wear, and chemical exposure.
3. Both strap and rope are not worn to the point of showing the red warning center of the Outer Strap or the white core of the Inner Rope.
4. Rope used is that supplied by Buckingham and intended specifically for use with this product.

Remove from service, destroy, and discard unit if it does not pass this inspection and replace immediately.

CLEANING:

Proper maintenance and storage of your equipment will prolong its useful life and contribute toward its performance. The SuperSqueeze Training Rescue Device should be cleaned with water and mild soap (a dish washing soap that removes grease (i.e. Dawn)) and be allowed to dry thoroughly without using excessive heat.

NOTE: This product can not be returned unless it is in new / unused condition.

BUCKINGHAM MFG. CO., INC.
BINGHAMTON, NY
1-800-937-2825

LOCKING SNAPHOOK INSPECTION PROCEDURE

- THOROUGHLY INSPECT EACH SNAPHOOK BEFORE EACH USE TO ENSURE:

- > Rivets are not loose and have adequate head on both sides.
- > Snaphook is not cracked, corroded, or distorted so that the keeper does not properly seat in the bill.
- > Keeper is not bent or distorted such that it does not properly seat in the bill without binding.
- > Keeper and lock mechanism are free of burrs.
- > Keeper and lock mechanism and rivet attachment points are properly lubricated.
- > Keeper extends into the bill, 3/16" min. (Fig. 7).
- > Keeper and lock mechanism springs are properly seated and aligned.

3/16" MIN.

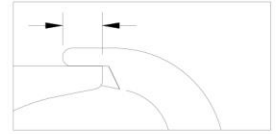


Fig. 7

- LUBRICATE lock mechanism and keeper on both sides AT LEAST WEEKLY or AS OFTEN AS REQUIRED to maintain smooth operation (no binding) with light weight lubricant such as WD-40®.

- LOCKING SNAPHOOKS FEATURE A SELF-CLOSING, SELF-LOCKING MECHANISM WHICH REMAINS CLOSED UNTIL UNLOCKED AND PRESSED OPEN FOR CONNECTION OR DISCONNECTION.

- > When the lock mechanism is not activated, the keeper should remain securely locked when depressed.
- > Depress the lock mechanism. It should move downward easily and spring back to its original position without binding or sticking (Fig. 8).

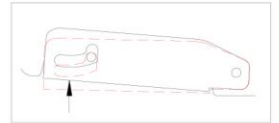


Fig. 8

>Depress the keeper and lock mechanism simultaneously, (Fig. 9) checking for:

- >> ease of movement — no binding
- >> keeper unlocks completely
- >> keeper opens completely, moves through its full range of motion smoothly, and returns to its original position within the bill.

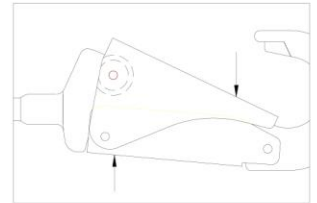


Fig. 9

> Move the keeper side to side to check for excessive side movement (Fig. 10).
Side movement is excessive if the keeper hangs up on the tab of the split bill (Fig. 11).

- **NOTE:** MISUSE / ABUSE OF THIS PRODUCT COULD LEAD TO IMPROPER FUNCTIONING WITH RISK OF INJURY !!! NEVER ATTEMPT TO ALTER OR MODIFY A SNAPHOOK TO BYPASS THE LOCK MECHANISM !!!

Fig.10

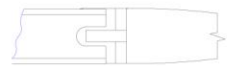
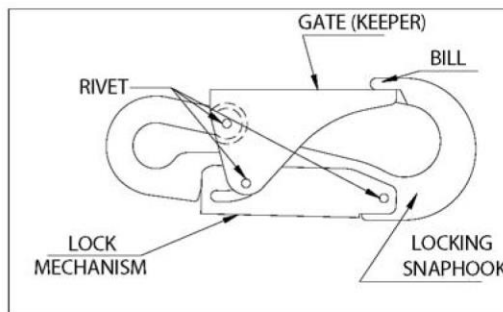


Fig. 11



Excessive keeper side movement.
Keeper hangs up on tab of the split bill



LOCKING SNAPHOOK (LINKLESS CONNECTION)

**BUCKINGHAM MFG. CO.
BINGHAMTON, NY
1-800-937-2825**

12 KV Capacitor Replacement

Single phase energized capacitor replacement

Mean time: 15 minutes

This will be a 12 KV energized event that will require the replacement of a single 100 KVAR capacitor that is mounted in a three phase rack by itself in the middle position. The neutral and phase must be covered on both sides of the pole as well as the insulators. The team will use a load buster tool to de-energize the capacitor. The load buster will be mounted on a hot stick and the lineman up the pole will use the load buster to open the switch barrel and then must remove the hot line clamp from the phase. Once the switch is opened and the capacitor is de-energized one of the lineman up the pole must yell to the judge (5 minute discharge time) before beginning any work on the capacitor. The team can then begin grounding and shunting capacitor. The capacitor will be removed from the rack and can be lowered and raised with the hand line hook. The ground man will un-hook the capacitor when it reaches the ground and then re-hook and send the same capacitor back up the pole. All connections will be wire brushed including the phase at the hot line clamp. The ground man will replace the fuse in the barrel and the barrel must be raised and lowered with a long stick by the ground man. The ground man must close the switch barrel in to re-energize the capacitor with a long stick, but cannot close in the barrel until the last lineman is on the ground. Ground man must yell out to the judge (coming hot) before closing in the switch. Time will stop when the long stick is completely retracted and on the tarp.

: MAD must be maintained at all times: (26’')

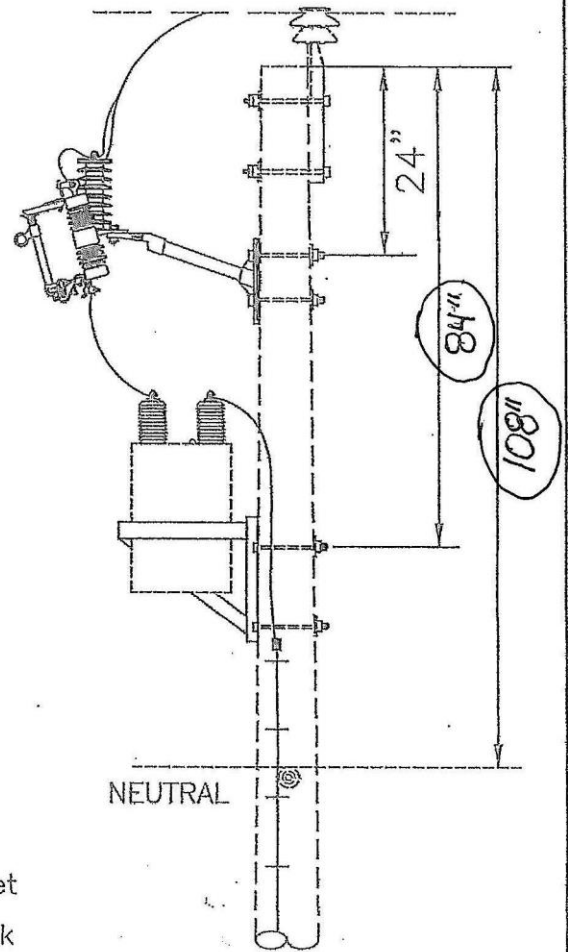
: Not yelling 5 minute discharge is a 10 point deduction

: Fuse barrel will be the threaded tube type cap

: # 6 copper is sufficient for shunt

Material provided

: 1 fuse



- Note: 1) 24" from top of pole to top bolt on T Bracket
 2) 84" from top of pole to top bolt on CAP rack
 3) 108" from top of pole to neutral

GLRA
SPEC

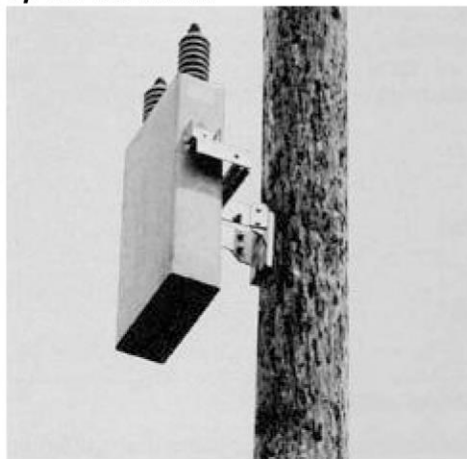
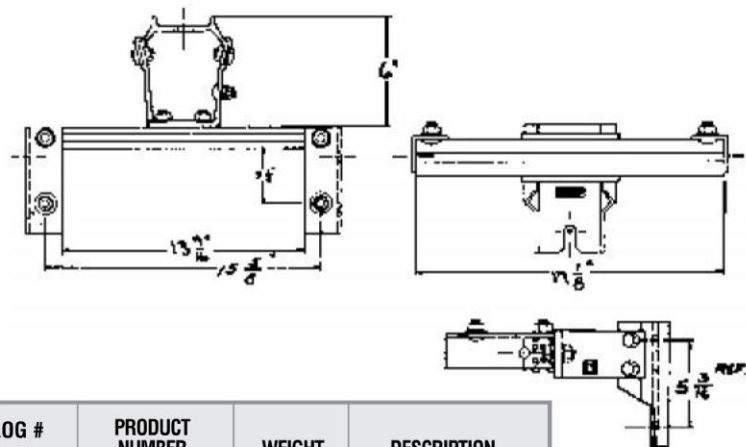
SINGLE PHASE CAPACITOR

1 - PHASE PRIMARY

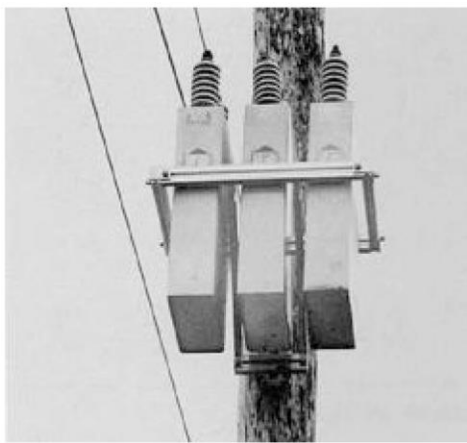
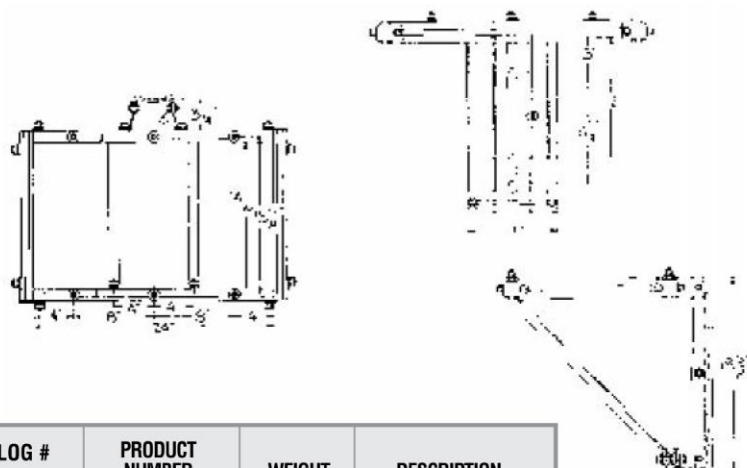
EQUIPMENT MOUNTS

Capacitor Racks

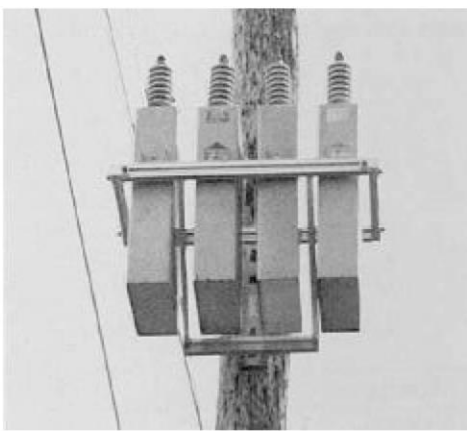
For mounting 1 to 6 capacitors in line or up to 12 in a cluster, up to 200 KVAR



CATALOG #	PRODUCT NUMBER	WEIGHT	DESCRIPTION
CR-1	51513	4.5 lbs.	For mounting one capacitor



CATALOG #	PRODUCT NUMBER	WEIGHT	DESCRIPTION
CR-3	51509	17 lbs.	For mounting up to 3 capacitors



CATALOG #	PRODUCT NUMBER	WEIGHT	DESCRIPTION
CR-3/4	51510	18 lbs.	For mounting up to 4 capacitors

JOURNEYMAN EVENT #3 – 2015

Journeyman event: 12 KV Sticking Event

Cross arm pin and insulator change on a straight line 3 phase pole

Mean time: 18 minutes

This will be a 12 KV Sticking Event which requires the replacement of the insulator and cross arm pin. The phase is tied in with a hot tie and the team must replace the hardware on the phase on the opposite side of the pole from the neutral. The neutral and the other 2 phases must be covered on both sides of the pole as well as the insulators. The cross arm must be covered while the phase is being untied and retied. The phase that the team is working on does not have to be covered as long as MAD is maintained while replacing hardware. The team will use either two wire tong saddles and sticks or a fiberglass lay out arm to lay out the phase. Two points of control must be maintained while the phase is being untied, retied and moved. Once the phase is laid out it can be locked down with either method and this will be considered positive control on the phase.

: MAD must be maintained at all times: (26’')

: Insulator cannot be broken or chipped

: Phase will be tied in with a hot tie. (See Packet)

: Tie cannot be worked on in the setup time

Material provided:

: 1 F-neck insulator and cross arm pin

: 12 feet piece #4 tie wire

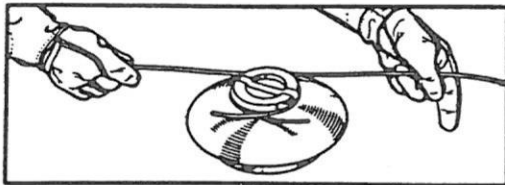
2. INSTALLING SINGLE "HOT" TIE ON SINGLE INSULATOR.

CAUTION

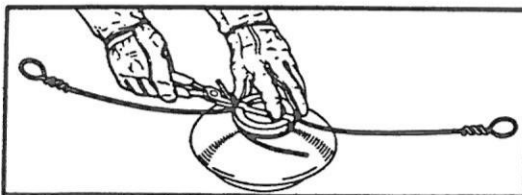
This tie should be installed on the insulator by ground crew or lineman before the insulator is placed in position.

NOTE

On both single and double ties, tie wires should be attached to the insulator with a clockwise twist. The ties should also be wrapped around the conductor in a clockwise direction on each side of the insulator to prevent untwisting the tie wire where it is attached to the insulator.



Pulling the Ties Tight Around the Insulator



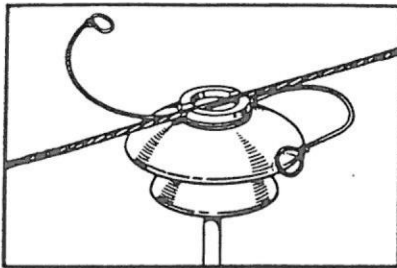
Wrapping One of the Ties with Line-man's Pliers

a. Form a loop in the end of the tie wire approximately one inch in diameter, and make two complete turns around the tie wire at the base of the loop. These turns must be tight enough to prevent slippage, which would alter the size of the loop. Determine the length of tie wire required for a minimum of six full turns around the conductor plus the length required around the insulator, and allow for two or more turns to secure the tie to the insulator. After the proper length has been determined, cut the tie wire at the unlooped end.

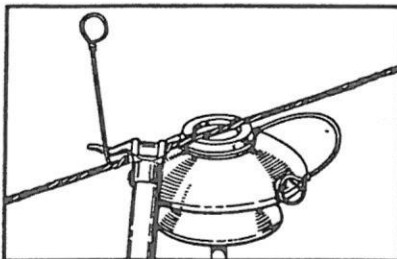
b. Prepare a second tie wire in the same manner.

c. Form a "U" in each tie wire to fit around the insulator and place the tie wires in position on the insulator. Be sure to form the loop so that the wire will fit closely around the insulator, and pull both tie wires tightly into position.

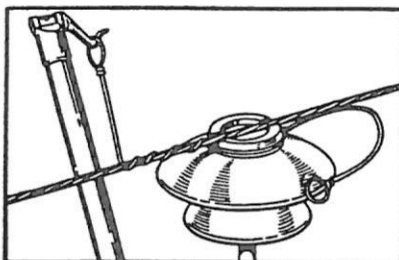
d. Tie each wire to the insulator with at least two close turns at the unlooped ends of the tie. Make certain that the ties are tight around the insulator.



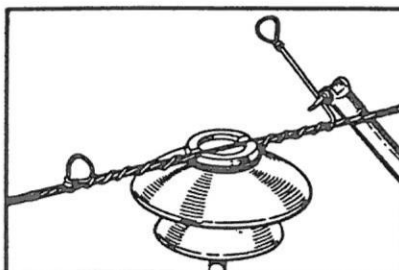
Both Single Ties in Place Ready for Tying in



Starting the Tying-In Process with a Rotary Prong



Rotary Prong Hooked into Tie Wire Loop



Tying at Opposite Side of Insulator

e. Shape the ties to form a letter "S" slightly below the groove of the insulator to prevent their extending too far from and above the insulator.

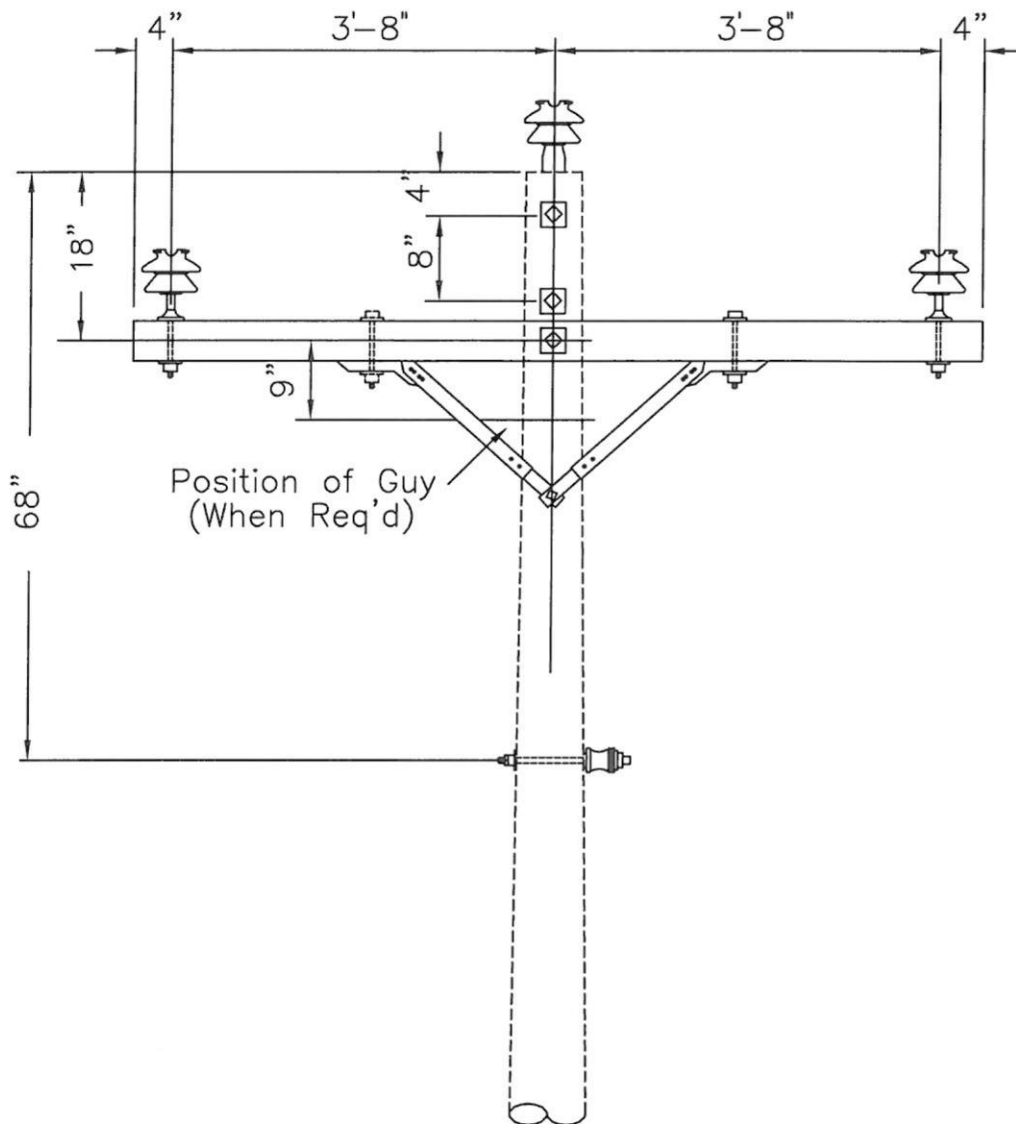
f. With the conductor transferred to and held securely in the groove of the insulator, the tie wires are ready to be wrapped around the conductor. This job can be done with whatever tie sticks the linemen prefer. The rotary-prong stick is employed by many for faster tying of looped ties.

g. Engage the tie wire with the rotary prong and begin the wrapping operation. Two or three turns can usually be performed with the prong acting against the tie wire near the conductor. After the first few turns, the prong should be hooked into the loop at the end of the tie wire and wrapping continued until the end of the tie wire is reached. the tie wire must be turned at least six times around the conductor. A greater number of turns will result if extra length of tie wire has been allowed. When the tie is complete, the loop should be left up.

NOTE.

The tie wire should be rotated in opposite directions at each side of the insulator.

h. The tie wire should be wrapped around the conductor evenly as a neat job is always the one having greater strength.



GLRA
SPEC

SINGLE SUPPORT ON CROSSARM
(TANGENT)

3 - PHASE PRIMARY

JOURNEYMAN MYSTERY EVENT 2015

All information on Mystery Event will be picked up at time of Registration

Pole B

APPRENTICE EVENT #1-2015

Written Test

Test time: 20 minutes

This will be a written test compiled of 30 questions. The questions will be taken from five Chapters of “ The Linemans and Cableman’s Handbook” 12th Edition.

(See below)

- 1. The questions will be multiple-choice and fill in the blank.**
- 2. All apprentice Lineman will take the test together at the beginning of the Rodeo.**

***All questions will count 1 point each.**

The chapters will be 5, 17, 29, 42, and 45

Chapter 5	–Distribution Circuits
Chapter 17	-Fuses
Chapter 29	-Underground System
Chapter 42	-Maintenance of Transmission and Distribution lines
Chapter 45	-Protective line and personal protective safety equipment

APPRENTICE EVENT #2 – 2015

Hurtman Rescue

Mean Time: 5 minutes

This event will be run one time with the apprentice and a helper participating to rescue the hurtman. Apprentice will have 5 minutes to set up and ask questions. The switch (cutout) feeding the transformer must be opened before the climber can step onto the pole. It will be opened from the ground using an extendo stick and rubber gloves. The stick must be off the ground and the body anytime it is touching anything energized. The climber must wear rubber gloves ground to ground. Apprentice will split handline and loop bottom part of handline around mannequin's legs. Then take the top part and wrap around the pole a minimum of one and a half wraps, take the rope under mannequin's arms and tie three half hitches (the splice cannot be part of the knot). The mannequin can then be lowered to the ground while the apprentice's helper uses the bottom part of handline tied to the mannequin's legs to pull mannequin on to the tarp. You must attempt to keep the mannequin off the pole and hardware. There will be **NO** gigs for incidental contact of the mannequin on the pole or neutral. The mannequin must land with all of his body on the tarp, and he must hit the ground gently as if a real person. Apprentices will provide their own tarp and place it 5' from pole centered under switch. **This event must be completed with the climber and mannequin in fall restraint.**

Event Specifications

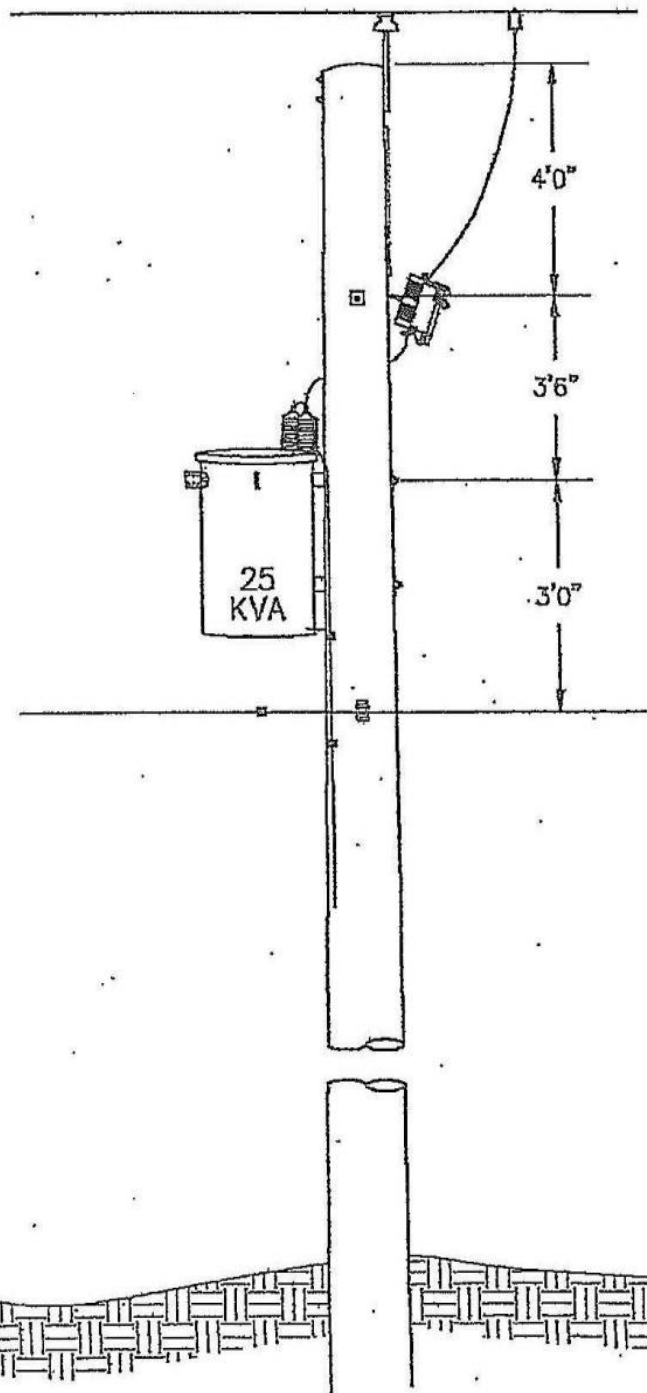
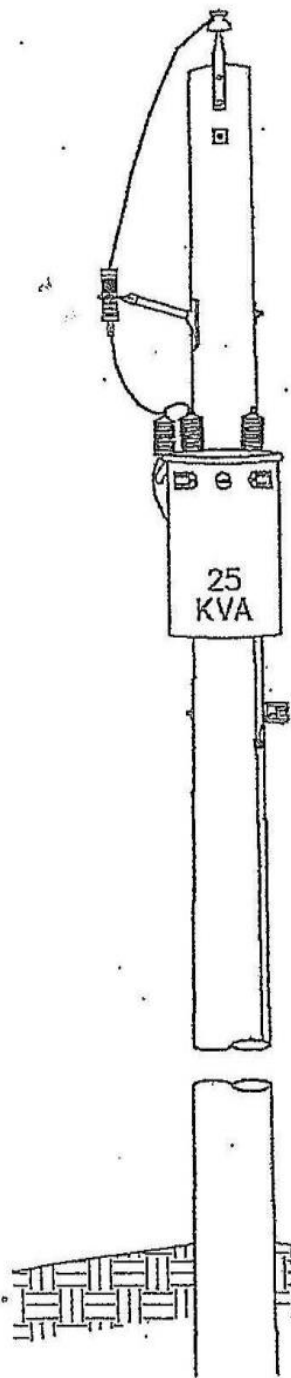
- Time starts at judge's signal with all apprentice and helper at least an arm's length from pole and extendo stick.
- Apprentices may use whomever they wish for a helper as long as that person is wearing a hardhat.
- Helper may only be used to tag the mannequin out.
- All rubber gloves will be in glove bag cuffs down with no fingers protruding.
- Apprentice's belt and hooks will be on the ground opposite the switch side of the pole.
- Extendo stick will be lying flat at on tarp fully retracted.
- Time will stop when mannequin is on the tarp with slack on the handline and extendo stick is fully retracted and back on tarp.
- Apprentice will stay on pole and help hang mannequin.
- Apprentice will close switch back after time stops.
- You must use the eye to open and close switch.
- When time starts extendo stick will be lying flat on tarp and must be back on tarp fully retracted before time will stop.
- Rubber gloves or work gloves must be worn anytime you are working or handling tools and equipment.
- The blade of the climber's knife must not be exposed while climbing.
- Judges will use a 4" PVC conduit between the rope and the mannequin to evaluate the rope knot, the eye splice cannot be in any part of the knot.

- You may use any standard knot or hitch on the mannequin's legs that can be easily removed. (including placing the rope through the hook, but it must not come off)
- Ox block will be use during this event
- Ox block can be used as designed

Teams will provide their own:

- Extendo Stick
- Tarp

- **Mannequin will hang from the top hanger of the transformer under the T-bracket.**



Buckingham Mfg. Co., Inc.

OX BLOCK™ EASE THE LOAD



OVERVIEW

The new Buckingham OX BLOCK™ is a rope snatch block with an integrated friction bar used for hurt man rescue, lowering loads, snubbing loads, and raising loads. It allows the rigging professional to handle loads with greater control. When lowering loads, tension is transferred from the worker to the OX BLOCK™. The OX BLOCK™ replaces standard handline blocks, parted blocks, and various snatch blocks. The OX BLOCK™ also has greater Working Load Limits than blocks of similar size.

MODEL
50061
PATENT PENDING



WLL Eye to Snag: 2500 lbs

WLL Eye to Friction Bar: 1500



MODEL 50061A-4



Model 50061A-4: OX BLOCK™ with an attached 4' x 5/8" adjustable sling and a steel carabiner.

Model 50061A-7: OX BLOCK™ with an attached 7' x 5/8" adjustable sling and a steel carabiner.

Model 50061B: OX BLOCK™ only with 2 steel carabiners.

WATCH THE VIDEO



www.buckinghammfg.com/OX

MODEL 50061A-4/80

The OX Block™ Handline Assembly with an attached 4' x 5/8" adjustable sling, a steel carabiner and an 80' x 1/2" handline assembly.

The OX Block™ handline assembly, as a whole, can be used during pole top rescue. However, DO NOT USE P/N 2406 handline hook [MBS 500 lbs.] or handline snap [MBS 750 lbs.] for human support. All components used for rescue must have a 5000 lb. rating, configured to accept human support. For rigging, ensure the weak link has a 5 to 1 safety factor.

Model 50061A-4/80: OX BLOCK™ with an attached 4' x 5/8" adjustable sling, a steel carabiner and an 80' x 1/2" handline assembly.*

Model 50061A-4/100: OX BLOCK™ with an attached 4' x 5/8" adjustable sling, a steel carabiner and an 100' x 1/2" handline assembly.*

Model 50061A-7/80: OX BLOCK™ with an attached 7' x 5/8" adjustable sling, a steel carabiner and an 80' x 1/2" handline assembly.*

Model 50061A-7/100: OX BLOCK™ with an attached 7' x 5/8" adjustable sling, a steel carabiner and an 100' x 1/2" handline assembly.*



www.buckinghammfg.com
1-800-YES-BUCK (937-2825)
MADE IN THE U.S.A.

Buckingham Mfg. Co.

PN 488PR – SuperSqueeze Rescue Trainer (with replacement rope) Instructions / Warnings

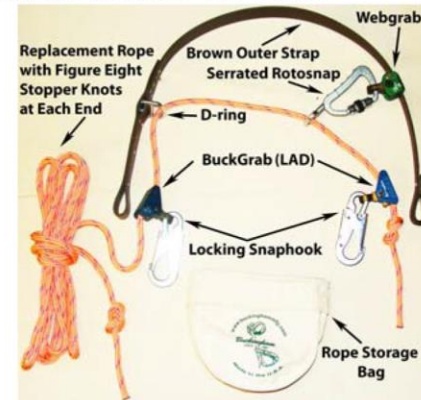
This device is intended for Rescue Training only. It is **not** intended for human support. This device is only to be used with the Buckingham Rescue Buck PN 694 or similar devices, (Fig. 2 or 3) never with a human.

Read and understand these instructions, warnings, and all labels attached to and packed with this product. 488 Series SuperSqueeze instructions must be used in conjunction with the instructions outlined below. If an additional copy is required, you may obtain one from the Buckingham website (www.buckinghammfg.com) or by contacting Buckingham Customer Service at 1-800-937-2825.

ATTACHMENT (Reference the 488 SuperSqueeze Instructions):

1. Attach each locking snaphook of the SuperSqueeze Rescue Trainer to the D-ring of the Linemens body belt (Ref. Fig. 3) (Ensure that a figure eight stopper knot is tied at each end of the rope (Fig. 1)).
2. Attach the rope storage bag/ excess rope to the side of the Rescue Buck nearest the D-ring of the SuperSqueeze Rescue Trainer (Fig. 1).
3. Ensure the area on the ground below the Rescue Buck is clear and raise it to the desired height.
4. Attach the SuperSqueeze Rescue Trainer to the pole and properly adjust (i.e. the same as that outlined for the SuperSqueeze).

PN 488PR
SuperSqueeze
Rescue
Trainer
Fig. 1



Note: Ensure rope is properly threaded into the BuckGrabs (LAD)(Ref. Fig. 4 or 5), the arrows shown on its body face towards the pole and the attached snaphook gates face outward (see Fig. 4a -5b)

RESCUE:

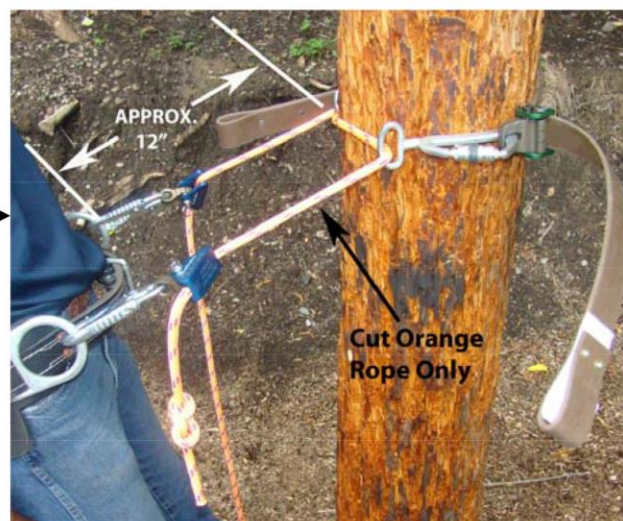
1. Ensure the area on the ground below the suspended Rescue Buck is cleared and secured (Never stand under a suspended object).
2. Properly attach a secondary suspension device and or lowering device to the Rescue Buck. Ensure all slack is removed from the secondary suspension device.
3. Cut the **Orange Rope Only** on the SuperSqueeze Rescue Trainer as shown in Fig. 3. Note: once rope is cut, the Brown Outer Strap will fall from the pole and to the ground below it.
4. Lower the Rescue Buck to the ground and resume rescue training exercise.

Fig. 2



Fig. 3

Rescue Buck
(Rescue Randy Shown)

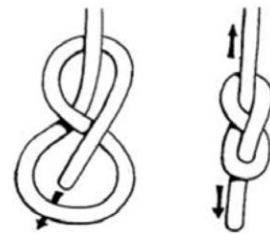
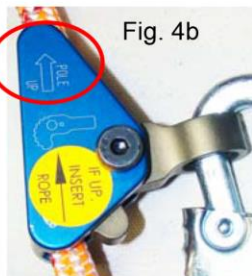
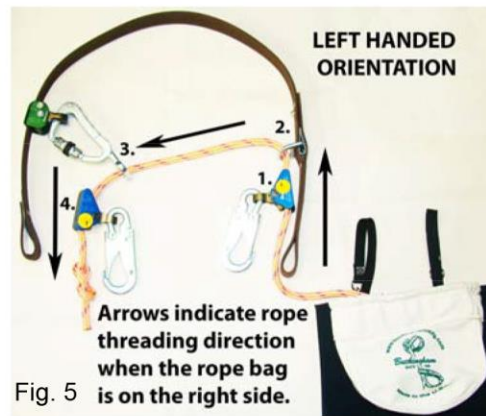
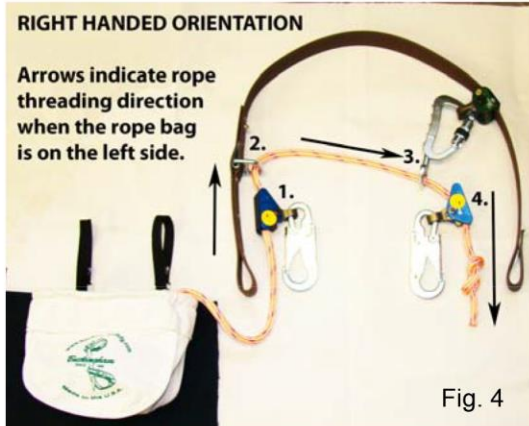


Scan to view Ox Block Pole
Top Rescue Video

REPLACEMENT ROPE CHANGE OUT: (Replacement Rope for Use With This Product Must Only Be That Supplied By Buckingham Mfg. Co. Use PN 488AR series only). Alternate diameter or rope types have not been tested to ensure they properly function with this device and may allow the rescue device to unexpectedly fall from the pole.

- The SuperSqueeze Rescue Trainer can be used in either a right or left hand orientation. However for proper rope replacement / rethreading, the rope bag must be placed on the same side of the Rescue Trainer as the D-ring (Fig. 4 right handed orientation), (Fig. 5 left handed orientation).

- When training is complete (rope has been cut) remove the cut rope section from the BuckGrabs (LAD).
- Tape the cut end of the rope to prevent it from unraveling when feeding through the BuckGrab (LAD).
- Properly feed the cut end of the rope through all applicable hardware (Fig. 4 or 5) and in the same direction as the arrows on the rope threading decals (Fig. 4a - 5b as applicable).
- To re-thread complete unit with replacement rope, follow the rope threading decal arrows and feed new rope through 1. BuckGrab (LAD), 2. D-ring, 3. Serrated Rotosnap stirrup and 4. 2nd. BuckGrab (LAD) as shown in Fig. 4 or 5. Ensure the BuckGrabs (LAD) are properly oriented with the arrow on the body facing towards the pole (Fig. 4b & 5b) and snap hooks gates face outward (Fig. 4 & 5).
- Ensure a figure eight stopper knot is tied at each end of the rope (Fig. 4, 5 & 6).



WARNINGS:

- Completely read, understand, and follow all instructions, warnings, and guidelines pertaining to this and all associated equipment before use. Failure to do so could result in serious injury or death.
- This equipment is intended for use by properly trained professionals only.
- It is the users responsibility to ensure that they are properly trained in the use, care, and limitations of this product.
- This device is intended to be used for rescue training only. It is not intended for any other purpose.
- Never disconnect hardware while suspended without a secondary means of support.
- Prior to use visually check the Orange Rope to ensure it is free from cuts from previous trainings and is properly threaded through all applicable hardware as shown above.
- Ensure the ground below the area of intended rescue training is clear and secured.
- Only Buckingham Mfg. Co. or those people authorized in writing by Buckingham Mfg. may make repairs to this equipment.
- Product covered under these instructions / warnings should not be resold / redistributed or re-used after use by original user.

INSPECTION : Inspect prior to each use, inspection should include but not be limited to the following:

1. All hardware and connecting devices are clean, functioning properly, free of cracks, deformation, burrs, excessive wear, or modifications. Also that:
 - Snaphooks meet the criteria outlined on the Locking Snaphook Inspection Procedure (located on the last page of this document).
 - BuckGrabs (LAD) are properly attached, in the correct orientation and rope is properly threaded.
2. All straps / ropes are free from kinks, knots, cuts, cracks, burns, abrasions, broken strands, excessive wear, and chemical exposure.
3. Both strap and rope are not worn to the point of showing the red warning center of the Outer Strap or the white core of the Inner Rope.
4. Rope used is that supplied by Buckingham and intended specifically for use with this product.

Remove from service, destroy, and discard unit if it does not pass this inspection and replace immediately.

CLEANING:

Proper maintenance and storage of your equipment will prolong its useful life and contribute toward its performance. The SuperSqueeze Training Rescue Device should be cleaned with water and mild soap (a dish washing soap that removes grease (i.e. Dawn)) and be allowed to dry thoroughly without using excessive heat.

NOTE: This product can not be returned unless it is in new / unused condition.

BUCKINGHAM MFG. CO., INC.
 BINGHAMTON, NY
 1-800-937-2825

LOCKING SNAPHOOK INSPECTION PROCEDURE

- THOROUGHLY INSPECT EACH SNAPHOOK BEFORE EACH USE TO ENSURE:

- > Rivets are not loose and have adequate head on both sides.
- > Snaphook is not cracked, corroded, or distorted so that the keeper does not properly seat in the bill.
- > Keeper is not bent or distorted such that it does not properly seat in the bill without binding.
- > Keeper and lock mechanism are free of burrs.
- > Keeper and lock mechanism and rivet attachment points are properly lubricated.
- > Keeper extends into the bill, 3/16" min. (Fig. 7).
- > Keeper and lock mechanism springs are properly seated and aligned.

3/16" MIN.

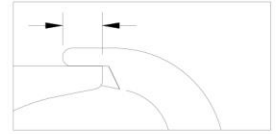


Fig. 7

- LUBRICATE lock mechanism and keeper on both sides AT LEAST WEEKLY or AS OFTEN AS REQUIRED to maintain smooth operation (no binding) with light weight lubricant such as WD-40®.

- LOCKING SNAPHOOKS FEATURE A SELF-CLOSING, SELF-LOCKING MECHANISM WHICH REMAINS CLOSED UNTIL UNLOCKED AND PRESSED OPEN FOR CONNECTION OR DISCONNECTION.

- > When the lock mechanism is not activated, the keeper should remain securely locked when depressed.
- > Depress the lock mechanism. It should move downward easily and spring back to its original position without binding or sticking (Fig. 8).

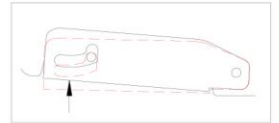


Fig. 8

>Depress the keeper and lock mechanism simultaneously, (Fig. 9) checking for:

- >> ease of movement — no binding
- >> keeper unlocks completely
- >> keeper opens completely, moves through its full range of motion smoothly, and returns to its original position within the bill.

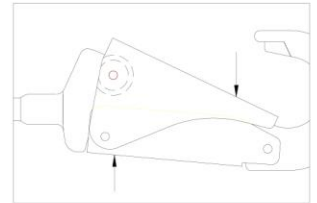


Fig. 9

> Move the keeper side to side to check for excessive side movement (Fig. 10).
Side movement is excessive if the keeper hangs up on the tab of the split bill (Fig. 11).

- **NOTE:** MISUSE / ABUSE OF THIS PRODUCT COULD LEAD TO IMPROPER FUNCTIONING WITH RISK OF INJURY !!! NEVER ATTEMPT TO ALTER OR MODIFY A SNAPHOOK TO BYPASS THE LOCK MECHANISM !!!

Fig.10

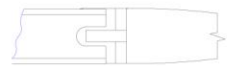
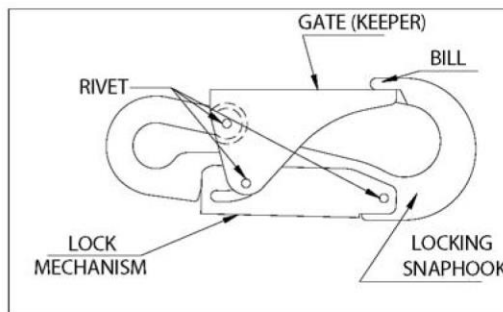


Fig. 11



Excessive keeper side movement.
Keeper hangs up on tab of the split bill



LOCKING SNAPHOOK (LINKLESS CONNECTION)

BUCKINGHAM MFG. CO.
BINGHAMTON, NY
1-800-937-2825

Apprentice Event # 3- 2015

INLINE SWITCH CHANGE

Mean time: 18 min.

Drop dead: 20 min.

This event will be considered dead and grounded on a single phase inline structure with #2 primary and neutral conductors. Apprentice must change switch that is in place with a new switch, old switch cannot be reused. Material up the pole such as washers, nuts, and bolts must be reused on jumpers. Apprentice will use a hot hoist and two grips to obtain the slack they need. A material bag with the hoist and two grips will be installed on an eye nut off the bottom bolt of the pole top pin. Time will start when Apprentice's first hook hits the pole and time will stop when first foot hits the ground. Bolts will be ½" and will take ¾ sockets on the nut.

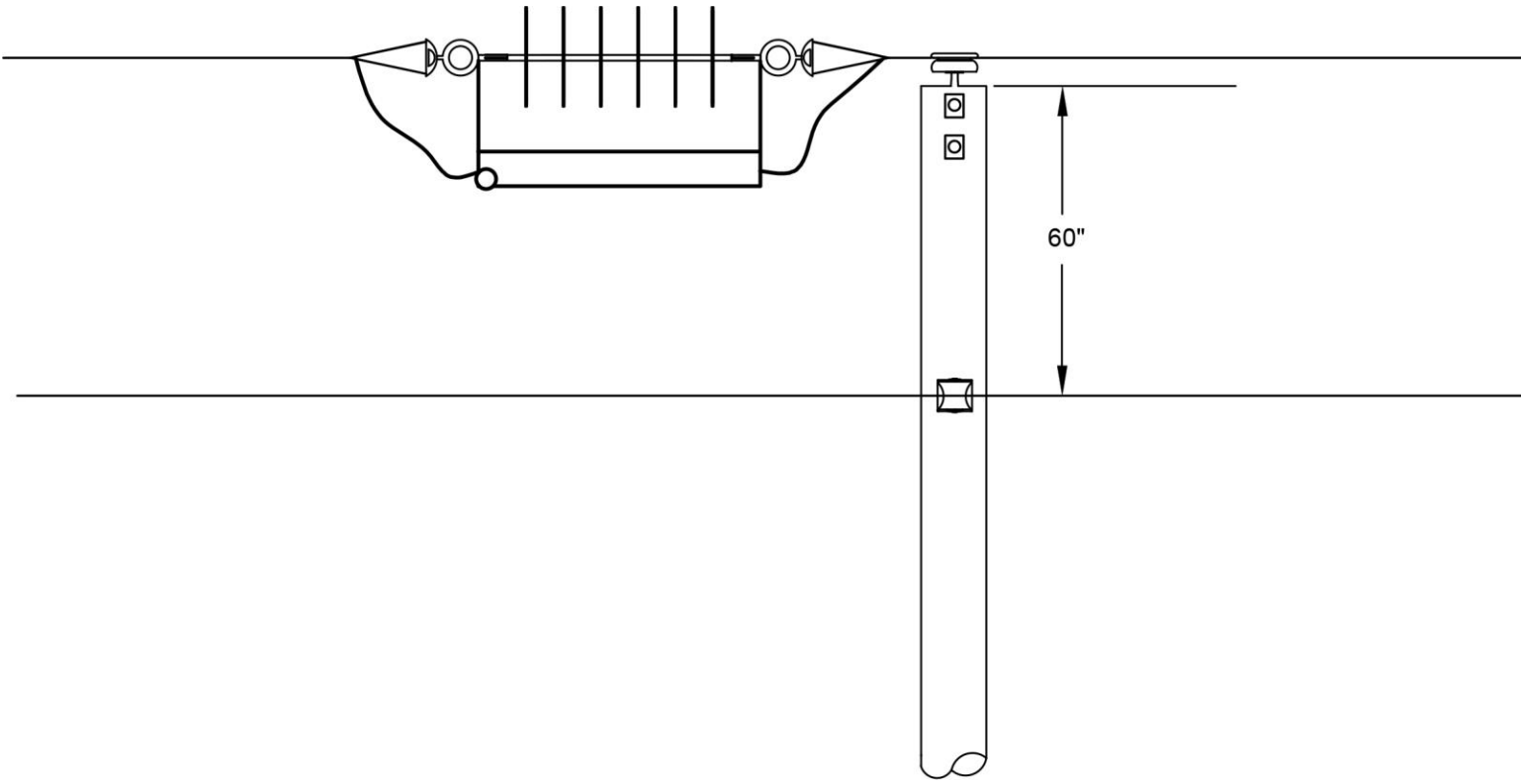
- All connections must be brushed
- Time will start when first hook hits pole
- Time will stop when first foot hits the ground
- Any material dropped will be 2 point deduct, broken switch if dropped will be a 10 point deduct
- Old switch must be replaced with new switch
- Mean time will be 18 min.
- Drop dead time will be 20 min.

MATERIAL PROVIDED:

1 – Inline switch

1 – Hot Hoist

2 – Grips



ALTD with ESP™ Insulator - RUS Listed

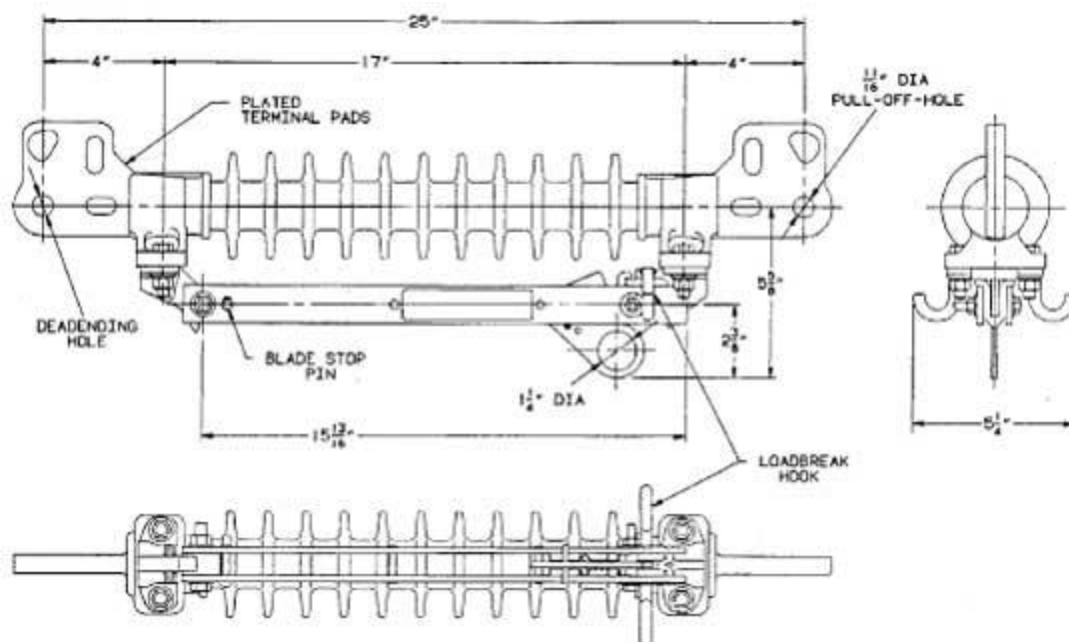
Catalog Number	BIL kV	CONT. AMPS	MOMENTARY AMPERES	RATED ULTIMATE STRENGTH lb.	WEIGHT	
					lb.	kg.
†ALTD06200R	200	600	40,000	15,000	11	4.9
*ALTD06200RL	200	600	40,000	15,000	13	5.7

- *Suffix "L" indicates 600-Amp Arc Chute interrupter.
- †RUS Listed.

Suffix	Description	Weight, lb.
B	4 stainless-steel terminal bolts	3/4
C	Extension link/angle adapter	3 1/2
T	Terminal Connectors (P-G Type ATC)	1

NOTE: Options B and T cannot be ordered together.





APPRENTICE MYSTERY EVENT 2015

All information on Mystery Event will be picked up at time of Registration

2015 Georgia Lineman's Rodeo Judging Questions

Please submit all event questions directly to the Georgia Lineman's Rodeo Association at the below contact information. **ALL QUESTIONS MUST BE SUBMITTED BY E-MAIL OR U.S. MAIL. QUESTIONS WILL NOT BE ANSWERED BY PHONE.** Please include your return contact information with any electronic or U.S. Mail communications. EVENT QUESTIONS ONLY.

G.L.R.A

eventquestions@garodeo.com

Tony Jordan- Events Committee Chair
Cobb Electric Membership Corp
1000 EMC Parkway
Marietta, Georgia 30328

For event questions, please visit www.garodeo.com/2015-rodeo/faq or submit directly to tony.jordan@cobbemc.com

Questions will be reviewed with the events committee as needed. The current members of the Events Committee are: Jeff Cook (ECG) – Don Ritchey (Snapping Shoals) – Bobby Watson (Marietta Power) – Johnny Wright (Flint EMC). All questions will be answered and posted to the website in a timely fashion.

❖ Please have all questions submitted before **Friday, April 24, 2015.** Questions will not be answered after this date.



**2015 Georgia Lineman's Rodeo
Camp John Hope (FFA), Fort Valley, GA
May 2, 2015
TEAM ENTRY FORM**

\$300 - Registration Fee

Registration Deadline – Monday, April 13, 2015

Out of State Entry Fee - \$400

Utility Name: _____ Contact: _____

Address: _____ City: _____ State: _____ Zip: _____

Please return with payment to: GLRA 6077 Middleground Rd. Louisville, GA 30434-4668; Fax: 706-547-5051

Journeyman #1	
Name:	T-Shirt Size:
Signature:	
Journeyman #2	
Name:	T-Shirt Size:
Signature:	
Groundman	
Name:	T-Shirt Size:
Signature:	
Alternate	
Name:	
Signature:	
Rodeo Coach's Name:	
Phone Number:	Email:

Division: ☐ IOU ☐ Municipal ☐ EMC

I understand that all hooks, belts, and hand tools furnished by me will be in a safe operating condition. Participants are responsible for their own transportation, hotel, and meal expenses en route and during the Rodeo. Participants will be required to sign a liability release before participating in the Rodeo; releasing the Rodeo sponsors and their employer from any liability should an injury occur during the Rodeo.



**2015 Georgia Lineman's Rodeo
Camp John Hope (FFA), Fort Valley, GA
May 2, 2015**

APPRENTICE ENTRY FORM

\$100 Registration Fee

Registration Deadline – Monday, April 13, 2015

Out of State Entry Fee - \$150

Utility Name: _____

Address: _____ City: _____ State: _____ Zip: _____

Please return with payment to: GLRA 6077 Middleground Road, Louisville, GA 30434; Fax: 706-547-5051

Apprentice	
Name:	T-Shirt Size:
Signature:	
Name of your Rodeo Coach:	
Coach's Phone Number:	
Coach's E-mail Address:	
Utility Contact Person:	

Division: (Check One) ☐ IOU ☐ Municipal ☐ EMC

I understand that all hooks, belts, and hand tools furnished by me will be in a safe operating condition. Participants are responsible for their own transportation, hotel, and meal expenses en route and during the Rodeo. Participants will be required to sign a liability release before participating in the Rodeo; releasing the Rodeo sponsors and their employer from any liability should an injury occur during the Rodeo.

2015 GEORGIA LINEMAN'S RODEO RELEASE

I, _____ (hereinafter "Releasor")
PRINT NAME

of _____, City of _____, State of _____,
COMPANY NAME

the undersigned, with the intent of binding myself, my spouse, and my heirs, legal representatives and assigns, executed in this Release as my own free act and deed.

Releasor, being of lawful age, in consideration of being permitted to participate in the Georgia Lineman's Rodeo to be located at Camp John Hope, 281 Hope Entrance Road, Fort Valley, GA, on the date of May 2, 2015, do for myself, my spouse, and my heirs, legal representatives and assigns, hereby release and forever discharge all sponsors including: the ELECTRIC CITIES OF GEORGIA, GEORGIA ELECTRIC MEMBERSHIP CORPORATIONS, and the GEORGIA LINEMAN'S RODEO ASSOCIATION, INC., each of their respective officers, directors, shareholders, employees, agents, representatives, attorneys, successors, affiliates, assigns, heirs, executors, administrators, or legal representatives, or any other successors in interest (hereinafter collectively referred to as "Releasee") of and from any and every claim, demand, action or right of action, of whatever kind or nature, either in law or equity, arising from or by reason of their participation in the Georgia Lineman's Rodeo, and hereby assumes all risks of any bodily injury or personal injuries known or unknown, death or occurrence that may occur during or as a result of Releasor's participation in the Georgia Lineman's Rodeo or any activities in connection with the Georgia Lineman's Rodeo, whether caused by negligence of Releasee or otherwise.

Releasor further releases Releasee, officials, other participants, or any person of any claim whatsoever on account of first aid treatment or services rendered during his/her participation in the Georgia Lineman's Rodeo.

Releasor agrees to indemnify, defend and hold harmless Releasee from any loss, liability, damage or cost, including reasonable attorney's fees, he/she may incur due to the presence of Releasor in or upon Camp John Hope during the Georgia Lineman's Rodeo or any activities in connection with the Georgia Lineman's Rodeo, except that caused by the sole negligence of the Releasee.

Releasor further grants the GEORGIA LINEMAN'S RODEO ASSOCIATION, INC. (the "GLRA") an irrevocable royalty-free license to use Releasor's name, photograph, voice, likeness, and any identifiable attributes in connection with any materials created by the GLRA in any media (hereinafter the "Photographs"). Releasor forever releases the GLRA from all claims associated with this license or the Photographs. The GLRA shall be the exclusive owner of the Photographs and the rights in the Photographs. Releasor represents that he/she will not seek to disaffirm this Release.

Releasor further warrants and states that:

1. He/She is eighteen (18) years of age or older.
2. He/She is a lineman or ground person.

3. He/She has been thoroughly trained in climbing utility poles and in working on or atop utility poles without supervision.
4. He/She is aware of and understands all safety regulations and rules applicable to servicing, repairing, replacing, or otherwise working with or on electrical power lines and utility poles.
5. He/She will supply, for his/her own use, any and all equipment necessary for his/her participation in the Georgia Lineman's Rodeo, including but not limited to, all hooks, belts, and hand tools.
6. He/She has inspected all of said equipment and tools, and he/she hereby warrant that they are in good condition and that they are suitable and adequate for use in servicing, repairing, replacing, or otherwise working with or on electrical power lines during the Georgia Lineman's Rodeo.
7. He/She is aware of all risks and dangers involved in participation in the Georgia Lineman's Rodeo, including without limitation, all risks associated with climbing or working on or atop utility poles where no fall arresting system, safety nets or other such devices are in use, and the risks associated with the failure of personal protective equipment such as belts, hooks, personal fall protection equipment, and hand tools, and hereby states that his/her participation therein is voluntary.
8. He/She is acting of his/her own accord and Releasee has in no way coerced, forced or suggested that Releasor participate in the Georgia Lineman's Rodeo.
9. He/She hereby agrees and understands that Camp John Hope has made no warranties as to the safety and condition of the facilities used at the Georgia Lineman's Rodeo and has not made any representations and warranties as to the ground and has not done any soil testing, and Releasor hereby agrees that he/she enters onto the property at his/her own risk.

This Release contains the entire agreement between the parties hereto, and the terms of this Release are contractual and not merely recitals.

Releasor further states that he/she has carefully read the foregoing Release, and knows and understands the contents thereof, and signs this Release as his/her own free act.

In witness whereof, hand and seal, Releasor has executed this Release in Macon County, Georgia, on the ____ day of _____, 2015.

_____(LS.)
RELEASOR

NOTARY PUBLIC



2015 Georgia Lineman's Rodeo
Camp John Hope (FFA) Fort Valley, GA
May 2, 2015
JUDGE'S REGISTRATION FORM

Deadline for Judge's Registration is Monday, April 13, 2015

Please return this form to: GLRA, 6077 Middleground Rd., Louisville, GA 30434-4668 or Fax to: 706-547-5051

We welcome judges from all participating companies. Each In-State Team will be required to provide one judge. Each Out-of-State Team will be required to provide one judge.

Utility Name: _____

Address: _____ City: _____ State: _____ Zip: _____

Judges:

1. Name _____ Title: _____

Event judged In Prior Rodeos: _____

Event Preferred: _____

Phone: _____ Fax: _____ Shirt Size: _____

E-mail Address: _____

What type of line experience do you have? _____

2. Name _____ Title: _____

Event judged In Prior Rodeos: _____

Event Preferred: _____

Phone: _____ Fax: _____ Shirt Size: _____

E-mail Address: _____

What type of line experience do you have? _____

3. Name _____ Title: _____

Event judged In Prior Rodeos: _____

Event Preferred: _____

Phone: _____ Fax: _____ Shirt Size: _____

E-mail Address: _____

What type of line experience do you have? _____

All judges should handle their own motel reservations the same as the rodeo teams.



**2015 Georgia Lineman's Rodeo
Camp John Hope (FFA), Fort Valley, GA
May 2, 2015**

AWARDS BANQUET TICKETS

Awards Banquet tickets are available for pre-sale, or on Friday and Saturday at the Rodeo grounds. This form is to purchase meals for Coaches, Team Support, and Spectators.

Banquet tickets are included for Teams, Apprentices and Judges.

Please return with payment to: GLRA, 6077 Middleground Rd, Louisville, GA 30434 Fax: 706-547-5051

Banquet Dinner meal reservations. Adults are \$15.00 each; and Children are \$8.50

Qty – Children's Tickets _____ @ \$ 8.50 each = \$ _____

Qty – Adult Tickets _____ @ \$15.00 each = \$ _____

TOTAL ENCLOSED \$ _____

Contact Name: _____

Utility Name: _____ Phone: _____

Address: _____

City: _____ State: _____ Zip: _____

**Orders can be picked up at Registration, Friday, May 1st, 2 pm – 4 pm.
Tickets will be picked up by:**

Name _____ Company _____



**2015 Georgia Lineman's Rodeo
Camp John Hope (FFA), Fort Valley, GA
May 2, 2015**

OFFICIAL RODEO T-SHIRT ORDER FORM

This form is to purchase official rodeo t-shirts and hats for Coaches, Team Support, Judges and Spectators.

Shirts are included for Teams and Apprentices.

Please return with payment to: GLRA, 6077 Middleground Rd., Louisville, Ga 30434 Fax: 706-547-5051

SHORT SLEEVE T'S

Small	_____ \$12.00	\$ _____
Medium	_____ \$12.00	\$ _____
Large	_____ \$12.00	\$ _____
X Large	_____ \$12.00	\$ _____
2 X Large	_____ \$14.00	\$ _____
3 X Large	_____ \$14.00	\$ _____
4 X Large	_____ \$14.00	\$ _____

LONG SLEEVE

Small	_____ \$20.00	\$ _____
Medium	_____ \$20.00	\$ _____
Large	_____ \$20.00	\$ _____
XL	_____ \$20.00	\$ _____
2XL	_____ \$23.00	\$ _____
3XL	_____ \$23.00	\$ _____
4XL	_____ \$23.00	\$ _____

CHILDREN T- SHIRTS

Qty - Youth Small	_____	@ \$10.00	\$ _____
Qty - Youth Medium	_____	@ \$10.00	\$ _____
Qty - Youth Large	_____	@ \$10.00	\$ _____

HATS

Qty - Hats	_____	@ \$10.00	\$ _____
------------	-------	-----------	----------

TOTAL ENCLOSED \$ _____

Apparel will be available for pickup at Registration, Friday, May 1st between 2 pm - 4 pm.

Apparel will be picked up by:

Name: _____ Utility Name: _____

Address: _____

City: _____ State: _____ Zip: _____

Phone Number: _____



Georgia Lineman's Rodeo Past Participants

Acworth Power	Gulf Power Co.
Albany Water, Gas, & Light	Habersham EMC
Arizona Public Service	Jackson EMC
Carroll EMC	Jefferson Energy
Cherokee Electric Corp.	Kansas City P&L
City of Cartersville	Kissimmee Utility
City of Ellaville	Lakeland Electric
City of Fairburn	Marietta Power
City of Forsyth	Mastec Energy Services
City of Lagrange	Middle Georgia EMC
City of New Bern	Mississippi Power Co.
City of Opelika, Alabama	Newnan Utilities
City of Sylacauga	Northern Virginia Elec. Coop
City of Tallahassee, Florida	Ocala Electric Utility
Cobb EMC	Okefenoke REMC
College Park Power	Owen Electric Coop
Coweta-Fayette EMC	Progressive Energy
Crisp County Power	PSE&G New Jersey
Diverse Power	Savannah Electric
Duke Power	Sawnee EMC
East Point Power	Snapping Shoals EMC
Flint Energies	Sumter EMC
Florida Power & Light	Thomasville Utilities
Gainesville Regional	Walton EMC
Georgia Power Co.	Washington EMC
Greystone Power Corp.	Wisconsin Electric
United States Air Force	



Georgia Lineman's Rodeo Association

Build Day: March 17, 2015

FRIDAY & SATURDAY – MAY 1-2, 2015

CAMP JOHN HOPE

281 HOPE ENTRANCE ROAD

>>FORT VALLEY, GA 31030 **OR** MARSHALLVILLE, GA 31057<<

Depending on which GPS you use

Now Available

[2015 Rodeo Sponsorship Book](#)

[2015 Rodeo Packet](#)

[2015 Rodeo Agenda](#)

2015 Accommodation Links

[Perry Area Hotels](#)

[Camp John Hope Reservations](#)

Special Appreciation to the following for their continued support of the Georgia Lineman's Rodeo:

[Powerlineman.com](#)

[Line-Man.com](#)

[IUOTA.org](#)

[Utilityinnovations.com](#)

[linemanbarn.com](#)

[stevedriscollart.com](#)



2015 Georgia Lineman's Rodeo & Vendor Expo

Camp John Hope – FFA Camp

Friday May 1st - Saturday May 2nd

AGENDA

Friday, May 1, 2015

10-11am Chief Judges' Meeting

10-2pm Vendor Show/Expo

Rodeo Registration – Release Forms Due @ This Time

Rodeo Sales - Apparel and Meal Ticket Sales

12:00pm - Lunch

1:00 pm - Judges' Meeting - Judges receive their assignments & Official Shirts

Saturday, May 2, 2015

7:30 am - Apprentice Written Test

8:00 am - Opening Ceremony & Flag Raising

8:30 am - Rodeo Competition Begins

6:00 pm - Rodeo Awards Banquet



Georgia Lineman's Rodeo Association

About

The Georgia Lineman's Rodeo Association (GLRA) is a non-profit organization incorporated under the laws of the State of Georgia. The purpose of the association is to support and conduct an annual Linemen's Rodeo, to maintain a focus on safety, training, and safe work practices in the electric utility industry as well as to promote relationships among the electric utility companies in Georgia and the Southeast.

The association is composed of members from two electric utility entities within the State of Georgia. These entities include the Georgia Electric Membership Corporation and the Electric Cities of Georgia. The association's Board of Directors is composed of three members.





Georgia Lineman's Rodeo Association

Contacts

TOPIC	CONTACT NAME	PHONE #	E-MAIL
Registration	Charles Mathis	(706) 829-1710	cmathis@jec.coop
Events	Tony Jordan	(770) 359-7115	tony.jordan@cobbemc.com
Sponsorship	Kathy Ivie	(770) 601-0290	kivie@waltonemc.com
Website	Christina Lenis	(770) 661-2770	clenis@ecoga.org
GLRA Executive Board			GLRA@garodeo.com
Chairman	Harry Reeves	(678) 588-3026	harry.reeves@georgiaemc.com
Vice Chairman	Brandon Wylie	(404) 456-4837	bwylie@ecoga.org
Secretary/Treasurer	Tommy Cook	(678) 378-4655	tommy.cook@cemc.com



**21st Annual
Georgia Lineman's Rodeo
May 1 – 2, 2015**

**CAMP JOHN HOPE, FFA CAMP
281 HOPE ENTRANCE ROAD
FORT VALLEY, GEORGIA 31030**

Exhibitor Sponsorship Registration Form

Organizations are invited to support the 21st Annual Georgia Lineman's Rodeo being held May 1-2, 2015 at **Camp John Hope in Fort Valley, Georgia**. The Georgia Lineman's Rodeo promises to be a major event that will provide an exceptional venue for you to **highlight your products and services** essential to the electric power industry.

Don't Miss Your Opportunity to Become an Official 2015 Georgia Lineman's Rodeo Sponsor!

Friday Luncheon Sponsor - \$2000

One Sponsorship Available

Benefits Include: Recognition as the Official Rodeo Luncheon Sponsor; Signage at the sponsored luncheon; Recognition from the podium at awards banquet; Signage during the awards banquet; Exhibit space at rodeo field on Saturday; Exhibit space at the Friday luncheon; Printed recognition in banquet program and event brochure; Recognition on the Official Georgia Lineman's Rodeo website as a Rodeo Luncheon Sponsor with your company logo and web link.

Awards Banquet Sponsor - \$2000

One Sponsorship Available - Fulfilled

Benefits Include: Recognition as the Official Rodeo Awards Banquet Sponsor; Recognition from the podium at awards banquet; Signage during the awards banquet; Exhibit space at rodeo field on Saturday; Exhibit space at the Friday luncheon; Printed recognition in banquet program and event brochure; Recognition on the Official Georgia Lineman's Rodeo website as a Rodeo Awards Banquet Sponsor with your company logo and web link.

Platinum Rodeo Event Sponsor - \$1000

Seven Platinum Sponsorships Available

Junior Lineman's Rodeo Sponsor - \$1000

One Jr. Lineman Rodeo Sponsorship Available

Benefits Include: Sponsor's name on event trophies and plaques; Recognition from the podium at awards banquet; Signage during the awards banquet; Premium exhibit space at rodeo field on Saturday; Sponsor's name displayed on event tent during rodeo; Exhibit space at the Friday luncheon; Printed recognition in banquet program and event brochure; Recognition on the Official Georgia Lineman's Rodeo website as a Platinum Level Sponsor with your company logo and web link.

Gold Rodeo Sponsor - \$500

Benefits Include: Exhibit space at rodeo field on Saturday; Exhibit space at the Friday luncheon; Printed recognition in banquet program and event brochure; Recognition on the Official Georgia Lineman's Rodeo website as a Gold Level Sponsor.

Silver Rodeo Sponsor - \$250

Benefits Include: Printed recognition in banquet program and event brochure; Recognition on the Official Georgia Lineman's Rodeo website as a Silver Level Sponsor.

General Inquiries and Exhibitor Registration should be directed to:

Georgia Lineman's Rodeo Association

Charles Mathis
cmathis@jec.coop



Georgia Lineman's Rodeo Association

The Georgia Lineman's Rodeo Association is a not-for-profit organization formed exclusively for charitable, scientific, and education purposes. The purpose of this organization is:

- To support and conduct an annual Georgia Lineman's Rodeo
- To maintain a focus on safety and safe work practices
- To promote relationships among the electric utility companies in Georgia and the Southeast

Board of Directors

Chairperson

Victor Hurst

Georgia Electric Membership Corporation

Vice Chairperson

Bruce Whittington

Electric Cities of Georgia

Secretary/Treasurer

Jim Wright

Georgia Electric Membership Corporation

Executive Committee

Chairperson

Harry Reeves

Georgia Electric Membership Corporation

Vice Chairperson

Brandon Wylie

Electric Cities of Georgia

Secretary/Treasurer

Tommy Cook

Carroll Electric Cooperative Corporation

Georgia Lineman's Rodeo
May 1 - 2, 2015
Camp John Hope, FFA Camp
281 Hope Entrance Road
Fort Valley, GA 31030

Company _____

Contact Name _____

Address _____

City _____

State _____

Postal/Zip _____

Work Phone _____

Cell Phone _____

Email _____

Sponsorship Level

_____ \$ 2000

Friday Vendor Show Sponsor

Fulfilled _____ \$ 2000

Awards Banquet Sponsor

_____ \$ 1000

Platinum Rodeo Event Sponsor

_____ \$ 500

Gold Rodeo Sponsor

_____ \$ 250

Silver Rodeo Sponsor

Will Exhibit On _____ Friday _____ Saturday _____ Both Friday & Saturday

Registration Deadline is April 13, 2015

Payment Methods:

Credit Card Payments Accepted At: www.garodeo.com

Check Payable to **Georgia Lineman's Rodeo Association** enclosed for \$ _____

Please Invoice _____ Purchase Order Number _____

*****PLEASE NOTE NEW ADDRESS & FAX *****

Georgia Lineman's Rodeo Association

Charles Mathis

6077 Middleground Rd.

Louisville, GA 30434

OR

Fax Registration Form To

Fax (706) 547-5051

Please email questions to:

cmathis@jec.coop

www.garodeo.com