

# INFORMATION PACKET



## GEORGIA LINEMAN'S RODEO

**FFA – CAMP JOHN HOPE**

**FORT VALLEY GEORGIA – MAY 4, 2019**



**Georgia EMC**



**ECG**

electric cities of georgia

## RODEO INFORMATION

The Twenty-Fifth Annual Georgia Lineman's Rodeo Competition will be held on May 4, 2019 at Camp John Hope: 281 Hope Entrance Rd, Fort Valley, GA 31030. Teams will compete in two divisions: EMC and Electric Cities.

On Saturday following the Rodeo, there will be an awards presentation at the Camp John Hope Banquet Hall.

Awards will be given to:

- First, second, and third place teams in each division.
- First, second, third, fourth, and fifth place teams overall.
- First, second, and third place teams for events, per division.
- First, second, third, fourth, and fifth place overall apprentice lineman.
- First, second and third place apprentice lineman in each division.
- First, second and third place apprentice lineman for events, per division.

Judges representing each division will judge the rodeo events. Rodeo teams consist of three members: two climbers and a ground person. They may also have a coach if desired. Climbers must be a Journeyman Lineman or meet the qualifications established by the International Lineman's Rodeo Committee. An Apprentice Lineman who has competed as an apprentice for four years or more cannot compete in the Apprentice events. After four years of Rodeo competition as an Apprentice, the Apprentice must compete on a Journeyman team.

A Lineman can be the Groundman, but must be designated as the Groundman for the Rodeo.

This packet is intended as an informational resource to answer commonly asked questions about the Lineman's Rodeo. It contains specification pages that may be used to build a practice line as well as information sheets for each announced event in the Rodeo. Also included is a list of common infractions for all events that judges will be looking for.

Registration will be at Camp John Hope on Friday, May 3<sup>rd</sup> with Competition on Saturday, May 4<sup>th</sup> from 8:00am - 2:00pm. All Apprentices must register individually and all Team members must register together. **All participants must provide a picture ID for registration.**

**Teams and Apprentices must have their own tools; handlines, hose bags, hand tools, wire brushes and tarp.** Teams that might be sharing some major items must register together and let someone know at registration to avoid being scheduled for the same event together. The schedule will be drawn prior to registration.

**Each Team is required to supply at least one judge per team for the rodeo.**

**One judge is required for every three apprentices that are from one utility.**

## RODEO INFORMATION (cont'd)

All poles for the rodeo will be Penta-treated 40' class 4, unless otherwise noted on event description sheet.

To compete in the Rodeo, please register online at [garodeo.com](http://garodeo.com) or email your completed forms to Charles Mathis at [CMathis@jec.coop](mailto:CMathis@jec.coop). If paying by check, please send form and payment to:

**GLRA | 6077 Middleground Road | Louisville, GA 30434**

**Please attempt to have registrations submitted before April 12th, 2019 to allow for ordering of supplies and materials.**

**You are responsible for making your own hotel reservations. GLRA will not be blocking rooms.**

There will be a special vendor show on Friday, May 3<sup>rd</sup> and Saturday May 4<sup>th</sup> at the FFA Camp. Vendors will be displaying the latest tools and equipment pertinent to Electric Utility Linemen. See agenda for more details.

The **TARGET** date for **Rodeo field construction** has been set for **March 12th** (Alternate date is set for **March 19th**). All Rodeo teams are encouraged to help with the initial construction of the field. Please contact **Tony Jordan** at **770-359-7115** or email [rodeoemc@yahoo.com](mailto:rodeoemc@yahoo.com) to coordinate your help in constructing the rodeo field.

Please do not grill on the Rodeo Field during the rodeo on Saturday. The smoke could be a distraction for the participants competing. Thanks for your cooperation in this matter.

Camp John Hope is a state run facility, **so no alcoholic beverages are allowed at the GLRA awards banquet.**

**Note: All events at the Georgia Lineman's Rodeo are for competition purposes only and in no way should be taken as to what a Journeyman Team or an Apprentice should or should not do at their own company.**

## EVENT CANCELLATION POLICY

The Georgia Lineman's Rodeo is sponsored and coordinated through the Georgia Lineman's Rodeo Association. GLRA is a non-profit organization that relies on participant entry fees, exhibitor sponsorships, and meal, shirt and hat orders to finance the Rodeo. Many of the expenses incurred are non-refundable to GLRA.

The Georgia Lineman's Rodeo will be cancelled in the event of prolonged Lightning, Tornados or other severe weather during the scheduled day of the Rodeo that make it impossible for safe participation. Furthermore, the Rodeo will be cancelled in the event of widespread power outages that require a **majority** of the Rodeo participants and judges to return to work.

In the event of cancellation, there will be no refunds for entry fees, sponsorships, and food and/or merchandise orders. Shirts and hats that were preordered and paid for will be delivered at a later date.

The decision to cancel the Rodeo due to weather related issues will be made by the Georgia Lineman's Rodeo Association Board of Directors and communicated by every means possible.

## RODEO JUDGE'S SCORING INFORMATION

The GLRA Events Committee sets forth the guidelines listed on the following pages. Each event is worth a total of 100 points.

Bonus points will **Not** be awarded in the 2019 GLRA Rodeo. Places for events will be determined by combination of highest score and fastest time.

JUDGING IS BASED UPON:

- **Safety**
  - **Work Practices**
  - **Neatness and Ability**
  - **Equipment Handling**
  - **Timely Completion of Event**
- Time will be used as a tiebreaker only.
  - Total number of events for each team = 4.
  - All Safety rules are to be observed during events.
  - Rubber gloves ground to ground for all pole events unless otherwise stated in event description.
  - **All material sent up and down the pole will be hooked on the handline hook or inside a material bag.**
  - Safety glasses are required for all events.
  - Ground man must wear work gloves.
  - Hard hats must be worn properly during all events.
  - Long sleeve shirts are required.
  - **A tool inspection will be conducted to check for safe condition and for alterations of tools such as: tapered cuts on straps, elongated holes in straps & belts, tape on straps, improper gaff length, buckles filed.**

## JUDGING GUIDELINES

**All safety rules are to be observed during events.**

### INFRACTIONS – 2 POINT DEDUCTION

1. Loss of hard hat.
2. Not wearing safety glasses.
3. No rubber on reach, fall, or slip.
4. Dropping tools.
5. Cutout with loss of control.
6. Hot-dogging.
7. Hand line operation while team is climbing.
8. Misuse of tools.
9. Wearing hard hat backwards.
10. Twisted hand line operation.
11. Not wearing OSHA approved lineman's belt.
12. Poor housekeeping (Tools and material must be kept on tarp).
13. Exceeding the mean time to complete an event.
14. If the event mean time is exceeded by more than 2 minutes the team will be stopped and be deducted 2 additional points. Timing will continue until the event is returned to normal and both linemen are back on the ground.
15. Not wearing work gloves.
16. Pushed or rolled up shirt sleeves.
17. Being late for an event. **Once an event is completed, teams and apprentices will be given 30 minutes to arrive at their next event. Teams and apprentices will be given one 1-hour lunch break.**
18. Failure to perform an event on schedule unless approved by Master Judge.
19. **Using unsafe tools in any event.**
20. **IMPROPER ADJUSTMENT ON FALL RESTRAINT WHILE CLIMBING OR IN A WORKING POSITION.**

### GENERAL RULES – 10 POINT DEDUCTION

1. Cut out and fall to the ground.
2. Accidental contact with energized phases.
3. Working opposite energized phases.
4. Insulators being broken during an event.
5. Not using hand line or material bag for sending material up and down the pole.
6. Ascending or descending the pole while other climber is working or un-safetied.
7. **FALL RESTRAINT/PROTECTION MUST BE USED IN THE 2017 GEORGIA LINEMAN'S RODEO.**
8. **5 MINUTES LATE FOR TEST (MORE THAN 5 MINUTES LATE THE COMPETITOR WILL RECEIVE A ZERO FOR THAT EVENT).**

### DISQUALIFICATION

1. Unprofessional behavior.
2. Practicing on the Rodeo field prior to the Rodeo.
3. Tampering with materials, tools or equipment on the Rodeo Field.
4. Unapproved use of alternates or changing status of team members during the events. See Master Judges for approved use of alternates or change in team status during Rodeo.
5. Teams and Apprentices must attempt all events to be eligible to win an event with the exception of a Team or Apprentice being injured the day of the rodeo. Final determination for a Team or Apprentice to win, that did not attempt all events, will be made by the Events committee.

## **RULES FOR PROTEST**

1. Protests must be submitted to the Chief Judge **BEFORE** the competitor exits the event.
2. Protest must be made on the **official protest form** to the Chief Judge for that event and resolved before leaving event location. (Protest forms will be at each event)
3. If the Chief Judge denies the protest, an additional two-point deduction will be applied to the score on that event.
4. Protest may be appealed to the Master Judges. If the Master Judges rule in favor of the team/apprentice the two-point deduction for the protest will be removed. However, if the Master Judges uphold the decision of the Chief Judge the two-point deduction will remain and an additional two-point deduction will be applied.

### **General Judging Guidelines**

- Teams and apprentices will have a **5 minute set-up time to prepare tools and also ask any questions they may have for the judge**. If the team or apprentice is not ready at the end of the 5 minute set-up time, the event time will begin.
- Climbers may assist each other with safety straps while re-positioning (1 or 2 steps) only.
- Blanket pins, small material (clamps, tie wire etc.) and small hand tools may be carried up in the lineman's ditty bag (no insulators, big bolts or items that may be dropped and injure someone) **unless otherwise noted on individual events**.
- The 1<sup>st</sup> climber must carry the handline, one climber must descend the pole to the ground before the handline is dropped and the climber who drops the handline must signal the groundman (yell "headache") before dropping the block.
- The handline may be placed just above the neutral clevis before the neutral is covered, however the climber shall not contact the **uncovered** neutral with **unprotected** parts of the body.
- All tools and material must be sent up and down with handline or drop line.
- It is permissible to drop a tag line to the ground from the pole, as long as the climber signals the groundman.
- It is permissible to lower rope blocks to the ground with its own rope.
- Material or tool bags may be suspended or hooked onto the bottom of the handline block.
- Brush/incidental contact of a **covered neutral** with **unprotected** parts of the body is **not** a deduction.
- Brush/incidental contact of a **covered primary** with **unprotected** parts of the body is a deduction.
- Hot Sticking Events; the climber cannot encroach inside the minimum approach distance on the hot stick with rubber gloves.
- Climbers **cannot** encroach inside the minimum approach distance (26 inches) of uncovered primaries that are not being worked with unprotected parts of the body, whether it be sticking or gloving events. The only permissible encroachment is with rubber gloves.
- **Working opposite energized phases at the same time is not allowed, whether it is with sticks or gloves.**
- Climbers shall not work on the ground with their climbing tools on. **Climbing tools are defined by the Event Committee as HOOKS/CLIMBERS ONLY. Body belts are not considered climbing tools.**
- Gaffs must be protected with gaff guards outside the 10 ft. circle.
- If material or tools come off the tarp and the groundman places it back on within 10 second s, this is not a deduction.
- It is permissible for the handline and ropes to come off the tarp and remain there.
- All Team members and Apprentices must wear work gloves while working on the ground.

- The Team or Apprentice should check the working condition of all material and tools provided during the set-up time.
- The Groundman cannot work directly under a climber who is ascending or descending the pole.
- The Groundman cannot stand under a suspended load such as a crossarm.
- Material and tool bags cannot be loaded before time starts, bags do not have to be unloaded before time stops. (Must be unloaded before leaving event site)
- A climber may assist the Groundman pulling rope blocks, or a handline for raising or lowering heavy material.
- **Every electrical connection must be wire brushed unless otherwise noted.**
- The tie wire can be cut in the set-up time.
- The tie wire cannot be made up in the set-up time.
- Homemade devices used to hold primary cover upright are allowed, but **must** be 10 ft. from the pole and subject to Chief Judge's discretion.
- Insulation shavings falling from the pole are not a deduction.
- Channel locks may be used as a holding tool only.
- **No ascending or descending the pole while other climber is un-safetied, working, or if handline is in operation.**
- When an event begins and ends with both climbers or the Apprentice back on the ground, the following will apply: **Event times will start on judges' signal.** Event time will stop when the last man down has one foot on the ground (earth).

**Time will start on judge's signal. Teams and apprentice will start event with safety hooked in D ring or placed over arm. (Cannot hold snap in hand) Time will stop when the last man down has one foot on the ground (earth). However, the fall arrest/safety does not have to be removed from around the pole for time to stop.**



## **JOURNEYMEN EVENTS**

<b>Four Competition Events</b>
--------------------------------

- 1. Hurtman Rescue**
- 2. Switch Relocation**
- 3. Mystery Event #1**
- 4. Mystery Event #2**

## **APPRENTICE EVENTS**

<b>Four Competition Events</b>
--------------------------------

- 1. Hurtman Rescue**
- 2. Tank Mount Arrester Change**
- 3. Mystery Event #1**
- 4. Mystery Event #2**

**THE 2019 GEORGIA LINEMAN'S RODEO IS A MANDATORY FALL  
RESTRAINT/PROTECTION RODEO**

## **Journeyman Event #1**

**2019**

“Are you ready?” after contestant responds in the affirmative the judge will say “Go.” The clock will start when the judge says go.

### **Hurt Man Rescue – Simulated Hot on 40’ Pole**

There will be two judges assigned to each team.

This will be a three man team event with all three contestants participating at the same time and at the same station. Two judges will be assigned to each team. One judge will be the initial responder to the emergency call and the other will run the stopwatch and observe the team for infractions. Both judges can deduct points from a team. Time starts at the judge’s signal “Go”. This event simulates that a man has been injured while working on a transformer station. We will supply the rescue manikin that will be equipped with the Buckingham super squeeze Buckingham 488PR-Rescue Super Squeeze and the 50061A-4/80-Ox Block 80’ Handline Kit will be used in this event.

An Extendo stick will be lying on the ground when the time starts, the groundman will raise the Extendo stick and open the cutout using the ring in the barrel before anyone has made any un-insulated contact with the handline or pole. Both the handline and the pole are considered at a different potential until the disconnect is open. One groundman will simulate calling for emergency help using a prewritten script provided by the Georgia Lineman Rodeo Association. The groundman cannot perform any other task until mayday call has been completed.

#### **Prior to start:**

The handline may not be repositioned during the setup. The event judge will position the handline the same way for each contestant, the hook of the handline shall be at the bottom center of the handline.

The lineman’s belt and hooks will be hanging on a structure simulating hanging in a truck bin, with safety straps snapped into D-ring and belt unlocked.

Rubber gloves are inside the glove bag at the start of the event and are required for the climber, ground to ground. Rubber gloves are also required for the groundman or journeyman if they intend to come in contact with the handline or pole prior to opening the disconnect.

The hurt man hangs in the center of the pole on the top transformer bracket.

The handline may not be relocated during the rescue and will not be touched by the contestants prior to start time.

The handline may be lowered in any manner as long as he has a controlled descent and does not hang up on anything. The two remaining men on the ground will help the climber lower the hurt man.

The mannequin shall be tied under the arms with three half hitches. (Eye splice/rope termination shall not be used as part of the half hitches.) The half hitch is the only acceptable knot.

The lineman on the pole must call out "headache" loudly if any item is dropped.

The "rope" on the Buckingham Super Squeeze Rescue belt is the only item to be cut. There will be a 10-point deduction for cutting the belt in the wrong place.

The mannequin should be moved smoothly to the ground. Contacting the pole is acceptable.

Mannequin initial contact with ground must be within the work area circle

Time is over when the mannequin is on the ground and the rope is slack. Groundman must signal slack in the rope.

Contestants must use the handline provided.

All point deductions are added together and subtracted from "100" for the team score.

The groundman will assist in hanging the hurt man mannequin for the next team.

Exceeding 4 minutes to complete the event will result in a two-point deduction.

Judges use a 3" PVC conduit between the rope and the mannequin to evaluate the spacing in the rope knot.

**Teams must provide their own Extendo Sticks**

## **JOURNEYMAN HURTMAN MAYDAY CALL**

Competitor : Truck 5502 to dispatcher... Mayday, We have a man down

Judge : Dispatcher to truck 5502... I understand you have a man down  
Mayday

Competitor : Truck 5502 That is correct, We are located at 281 Hope Entrance Rd, In Fort Valley, Georgia  
And we have a man down, We are beginning pole top rescue, and need emergency Medical  
aid.

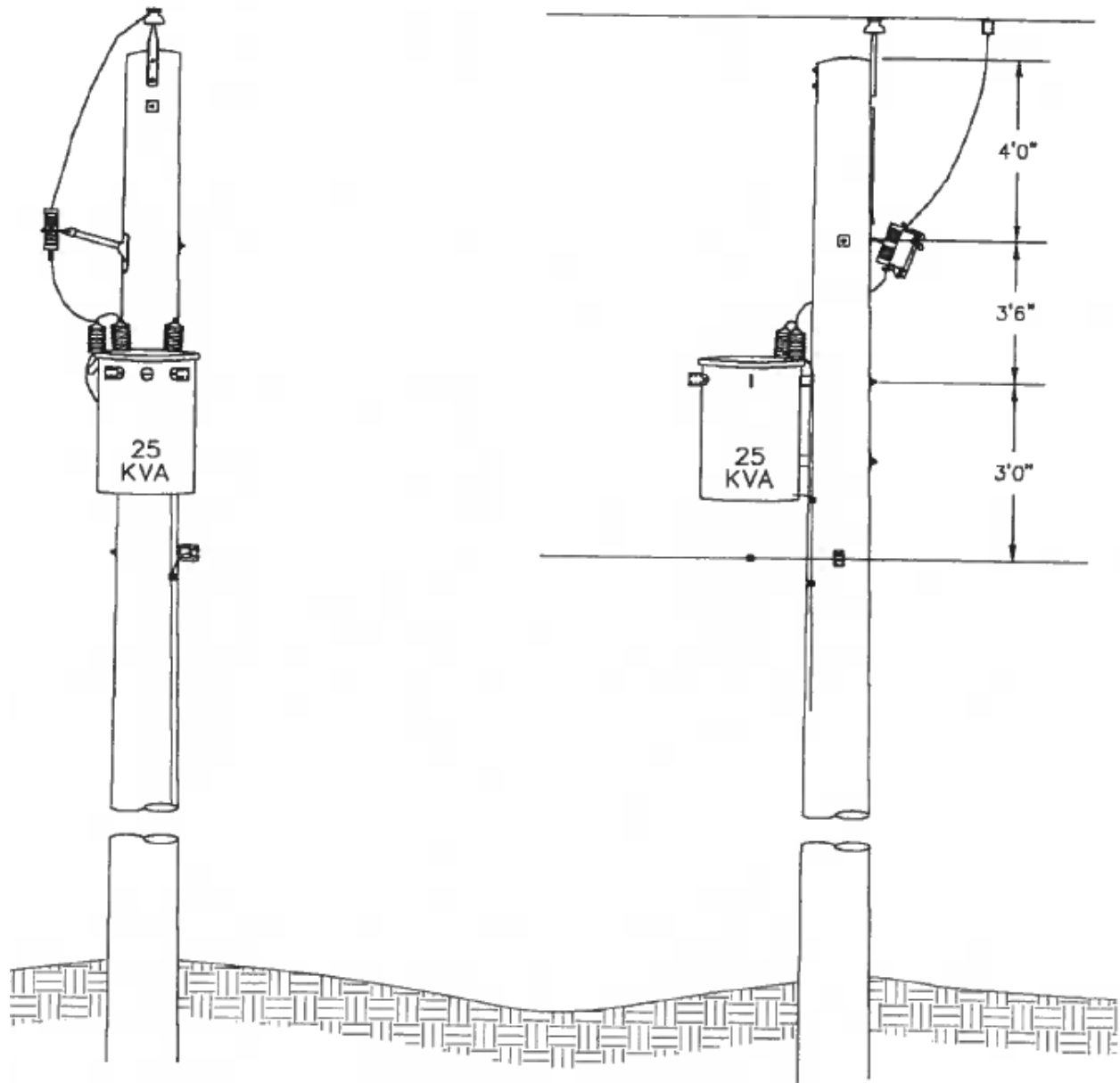
Judge : This is the dispatcher, I understand that you are located at 281 Hope Entrance Rd in  
Fort Valley, Georgia and need emergency aid.

Competitor : Truck 5502... That is correct dispatcher, We need Immediate  
assistance.

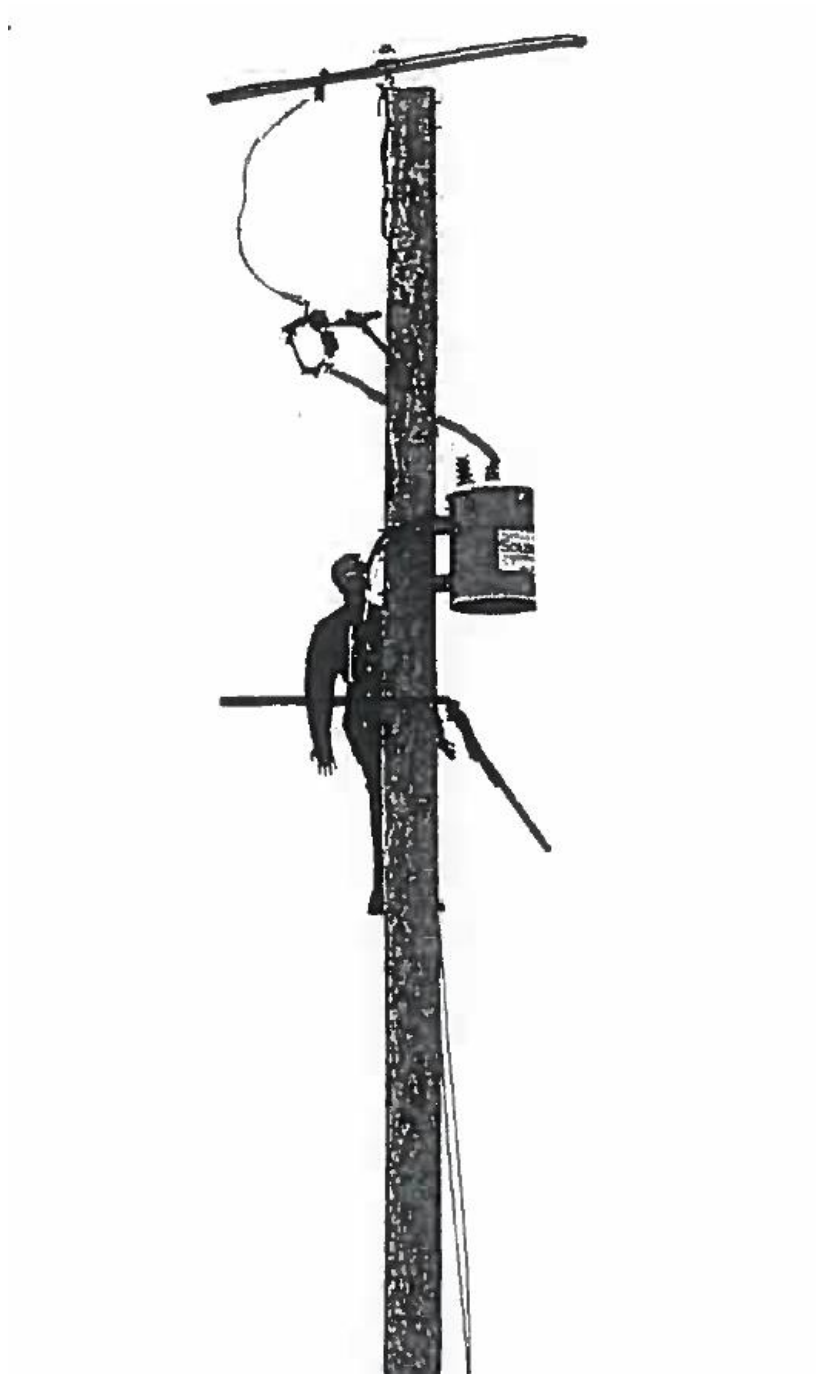
Judge : Dispatcher to truck 5502... Emergency Medical aid is on its way.

Competitor : Truck 5502... I understand that emergency medical aid has been dispatched and is  
on its way. Thank You, truck 5502 out

Judge: 10-4. We will be on standby if you need us... out



**Mannequin will hang from the top hanger of the transformer under the T-bracket.**



*Buckingham Mfg. Co., Inc.*

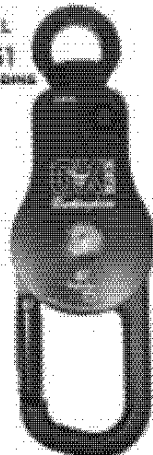
## OX BLOCK™ EASE THE LOAD



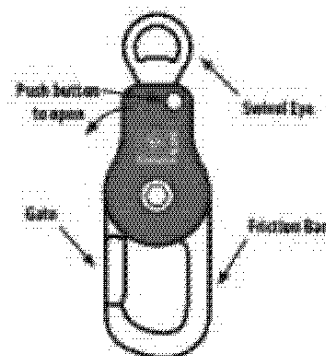
### OVERVIEW

The new Buckingham OX BLOCK™ is a rope snatch block with an integrated friction bar used for hurt man rescue, lowering loads, snubbing loads, and raising loads. It allows the rigging professional to handle loads with greater control. When lowering loads, tension is transferred from the worker to the OX BLOCK™. The OX BLOCK™ replaces standard handline blocks, parted blocks, and various snatch blocks. The OX BLOCK™ also has greater Working Load Limits than blocks of similar size.

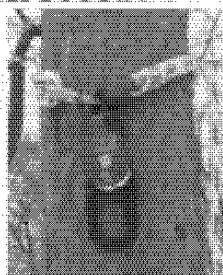
MODEL  
50061  
PATENT PENDING



WLL Eye to Snatch: 2500 lbs.  
WLL Eye to Friction Bar: 1500



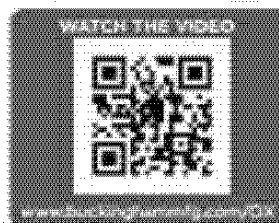
Model 50061A-4



**Model 50061A-4:** OX BLOCK™ with an attached 4' x 5/8" adjustable sling and a steel carabiner.

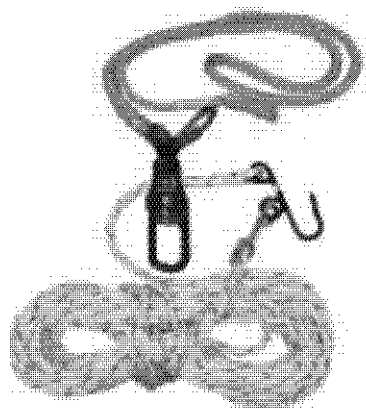
**Model 50061A-7:** OX BLOCK™ with an attached 7' x 5/8" adjustable sling and a steel carabiner.

**Model 50061B:** OX BLOCK™ only with 2 steel carabiners.



WATCH THE VIDEO

[www.buckinghammfg.com/OX](http://www.buckinghammfg.com/OX)



Model 50061A-4/80

**The OX Block™ Handline Assembly** with an attached 4' x 5/8" adjustable sling, a steel carabiner and an 80' x 1/2" handline assembly.

The OX Block™ handline assembly, as a whole, can be used during pole top rescue. However, DO NOT USE P/N 2406 handline hook [MBS 500 lbs.] or handline snap [MBS 750 lbs.] for human support. All components used for rescue must have a 5000 lb. rating, configured to accept human support. For rigging, ensure the weak link has a 5 to 1 safety factor.

**Model 50061A-4/80:** OX BLOCK™ with an attached 4' x 5/8" adjustable sling, a steel carabiner and an 80' x 1/2" handline assembly.\*

**Model 50061A-4/100:** OX BLOCK™ with an attached 4' x 5/8" adjustable sling, a steel carabiner and an 100' x 1/2" handline assembly.\*

**Model 50061A-7/80:** OX BLOCK™ with an attached 7' x 5/8" adjustable sling, a steel carabiner and an 80' x 1/2" handline assembly.\*

**Model 50061A-7/100:** OX BLOCK™ with an attached 7' x 5/8" adjustable sling, a steel carabiner and an 100' x 1/2" handline assembly.\*



[www.buckinghammfg.com](http://www.buckinghammfg.com)

## Journeyman Event #2

2019

JOURNEYMAN EVENT: 15KV SWITCH RELOCATION & PHASE CHANGE

MEAN TIME: 15

DROP DEAD: 17

Teams will be required to install a new bracket, cutout, jumpers and hot line clamps on the D.A. bolt opposite the existing energized cutout and bracket. In order to minimize the outage time between phase changes there will be no handline operation nor will there be any tools or material allowed on the handline during the outage time. During the installing and removal of the cutout and bracket both phases on that side of the pole must be covered. ' only 2 primary covers will be allowed for this event'. Minimum approach distance must be maintained with sticks as well as with any uncovered phases. " The outage time cannot start until both cutouts and brackets are installed on the pole and ready to be energized."

- Neutral and assemblies will be covered on both sides of the pole
- Hard covers with sticks must be used on primary wire
- All connections must be brushed
- Fall protection must be used according to MFG suggestion
- No handline operation or tools, material on the handline during the tap outage

Materials provided :

- 1- cutout
- 1- cutout bracket
- 2- pieces of #6 copper wire for jumpers
- 2- Hot line clamps



Primary arms 18" from top of pole, tap 12" from bottom arm bolt, neutral 72" from top of pole





# **JOURNEYMAN EVENT #3**

## **MYSTERY EVENT**

**2019**

All information on Mystery Event will be picked up at time of Registration



# **JOURNEYMAN EVENT #4**

## **MYSTERY EVENT**

**2019**

All information on Mystery Event will be picked up at time of Registration





# APPRENTICE EVENT #1

2019

## Apprentice Events

Mean Time: 5 minutes

Apprentice Hurtman Rescue on 40' Pole

**APPRENTICE MUST WEAR RUBBER GLOVES DURING THIS EVENT.**

Buckingham will supply the 488PR – Rescue Super Squeeze for the manikin and the 50061A-4/80-Ox Block 80' Handline Kit for this event.

**Essex will supply the manikin for this event – SKU: 1531, 6' tall, 200 lbs.**

Time starts at the judge's signal with the apprentice standing at an arm's length from their climbing tools. The apprentice's belt and hooks will be hanging on short pole to simulate truck bin, safety strap snapped into D-ring and belt unbuckled. No belt will be allowed to be placed on or around the pole.

Looking at the pole from the cross arm side, the hand line will be hung on the right side. The hurt man will hang in the center of the pole on the cross arm side with both ends of the Buckingham Rescue Super Squeeze safety rope through the braces. This will simulate an injury to a right-handed man wearing a fall arrest belt.

The apprentice must properly use the Buckingham Ox Block and attached handline to lower the mannequin. **The apprentice must take two wraps around the friction bar of the Ox-Block.**

The apprentice will not be allowed to throw the handline over the crossarm to lower the mannequin.

**If you are unsure as to how to properly use the Buckingham Ox Block handline, visit the Buckingham booth at the expo for detailed instructions. Link to Buckingham is:**

**<http://buckinghammfg.com/products/utility/supersqueeze-with-woven-inner-strap-for-distribution-488w2q3/>**

***Manikin Info: Essex Rescue Dummy SKU 1531: 6' Tall, 200 lbs.***

**<http://www.estextmfg.com/Rescue-Dummy-Pole-Top-Bucket-Rescue-P171C120.aspx>**

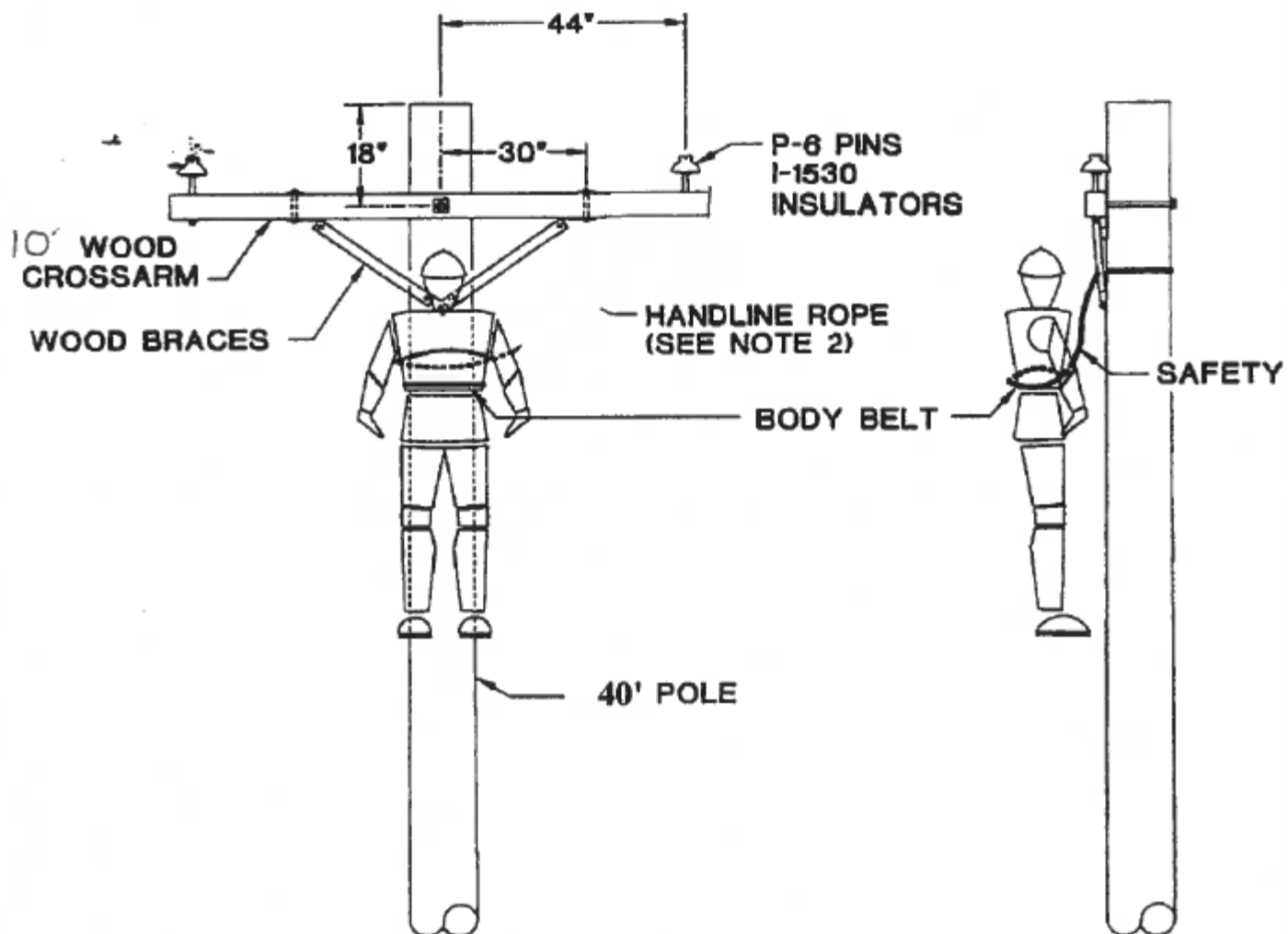
The mannequin should be tied under the arms with three half hitches. (Eye splice should not be used as part of hitches.) The half hitch is the only acceptable knot.

Be sure to call out "Headache" or similar warning loudly if you drop any part of the Ox Block handline such as the hook or snap.

The handline hook or snap must land in the circle of wood chips at the base of the pole if dropped.

You must cut the Buckingham Super Squeeze rope. There will be a 10- point deduction for cutting the Super Squeeze belt.

The mannequin should be moved smoothly to the ground without contacting the pole.



**Ox Block will be installed 30 inches from the pole just outside of the wood brace.**



**Apprentice tank mount arrester change**

Mean time: 12 minutes

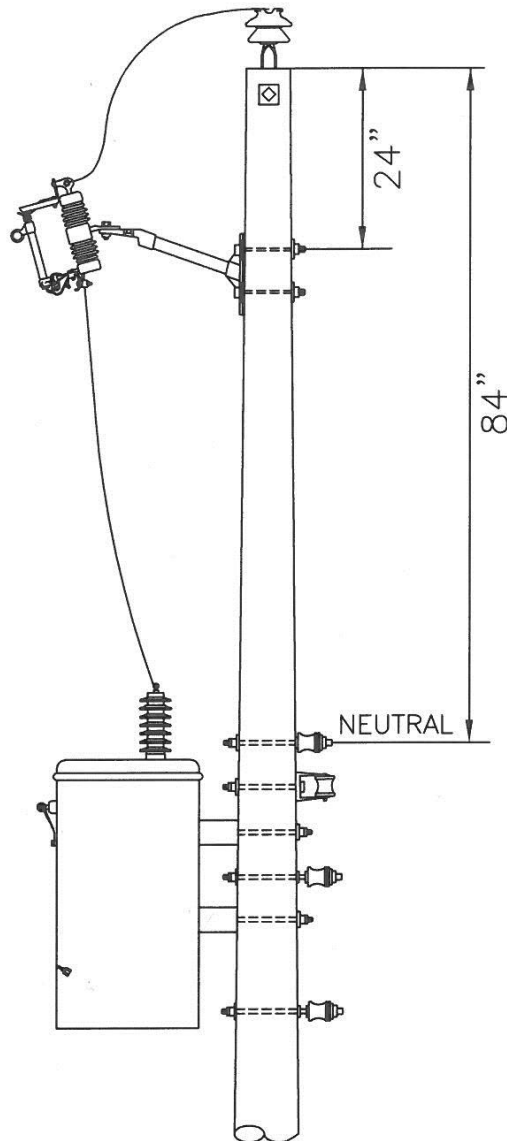
Drop dead :14 minutes

In this event the apprentice will climb and change out a tank mount arrester on a transformer. The apprentice must first open up the cutout with a long stick and pull the meter to isolate the transformer from any potential back feed. The apprentice will then be allowed to tool up and climb the pole to change out the bad arrester. Once the arrestor has been changed the apprentice will remove his hooks and close in the cutout. Then check for and call out the voltage in proper sequence (120,120, 240) and reset the meter. Time will stop when the apprentice completes the meter set and calls time. All material should be pulled up with a tagline and bag supplied by the apprentice. The apprentice will supply their own long stick and volt meter. Rubber gloves must be worn while climbing, removing and setting the meter and while checking voltage. The long stick must not come in contact with the body while opening or closing the cutout.

**Material provided**

1- Lightning arrester





Note: 1) 24" from top of pole to top bolt on T-Bracket  
 2) 84" from top of pole to neutral

GLRA  
 SPEC

SINGLE PHASE TRANSFORMER & 3WO

1 - PHASE PRIMARY





# **APPRENTICE EVENT MYSTERY EVENT #3**

**2019**

All information on Mystery Event will be picked up at time of Registration



# **APPRENTICE EVENT MYSTERY EVENT #4**

**2019**

All information on Mystery Event will be picked up at time of Registration





## 2019 Georgia Lineman's Rodeo Event Questions

Please submit all event questions directly to the Georgia Lineman's Rodeo Association using the contact information below. ALL QUESTIONS MUST BE SUBMITTED VIA EMAIL OR VIA THE WEBSITE. NO QUESTIONS WILL BE ANSWERED BY PHONE. Don't forget to include your contact info.

Tony Jordan, Events Committee Chair: [rodeoemc@yahoo.com](mailto:rodeoemc@yahoo.com)

Website Submission: [www.garodeo.com/faq](http://www.garodeo.com/faq)

### GLRA Events Committee Members

Calvin Vallee, Electric Cities of Georgia (ECG)

Bobby Fincher, Snapping Shoals EMC

Ronnie Poston, Cartersville Electric

Tim Burns, Jackson EMC

Sam McCrary, Flint Energy

Blake Manning, Crisp County Power

Wayne McConnell, Jackson EMC

Les Wilson, Marietta Power

- Please have ALL questions submitted before **Friday, April 26, 2019**. Questions submitted after this date will not be answered.



**2019 Georgia Lineman's Rodeo**  
**Camp John Hope (FFA), Fort Valley, GA**  
**May 4, 2019**

**TEAM ENTRY FORM**

**Registration Fee:** \$350 – In State | \$450 – Out of State

**Registration Deadline:** Friday, April 12, 2019

**\*Each Team is required to provide One Judge per team for the rodeo.\***

Utility Name: \_\_\_\_\_ Contact: \_\_\_\_\_

Address: \_\_\_\_\_ City: \_\_\_\_\_ State: \_\_\_\_\_ Zip: \_\_\_\_\_

Division: ☐ Municipal ☐ EMC

Please email completed form to Charles Mathis at [CMathis@jec.coop](mailto:CMathis@jec.coop) or fax it to 706.547.5051

**NOTE: You must submit payment via the website after sending your form. [Garodeo.com](http://Garodeo.com)**

Journeyman #1	
Name:	T-Shirt Size:
Signature:	
Journeyman #2	
Name:	T-Shirt Size:
Signature:	
Groundman	
Name:	T-Shirt Size:
Signature:	
Alternate	
Name:	
Signature:	
Rodeo Coach's Name:	
Phone Number:	Email:

*I understand that all hooks, belts, and hand tools furnished by me will be in a safe operating condition. Participants are responsible for their own transportation, hotel, and meal expenses in route and during the Rodeo. Participants will be required to sign a liability release before participating in the Rodeo; releasing the Rodeo sponsors and their employer from any liability should an injury occur during the Rodeo.*



**2019 Georgia Lineman's Rodeo**  
**Camp John Hope (FFA), Fort Valley, GA**  
**May 4, 2019**

**APPRENTICE ENTRY FORM**

**Registration Fee:** \$125 – In State | \$175 – Out of State

**Registration Deadline: Friday, April 12, 2019**

***\*If a utility sends multiple apprentices, One Judge is required for every three apprentices competing.\****

Utility Name: \_\_\_\_\_ Contact: \_\_\_\_\_

Address: \_\_\_\_\_ City: \_\_\_\_\_ State: \_\_\_\_\_ Zip: \_\_\_\_\_

Division: ☐ Municipal ☐ EMC

Please email this form to Charles Mathis at [CMathis@jec.coop](mailto:CMathis@jec.coop) or fax it to 706.547.5051

***NOTE: You must submit payment via the website after sending your form. [Garodeo.com](http://Garodeo.com)***

Apprentice	
Name:	T-Shirt Size:
Signature:	
Name of your Rodeo Coach:	
Coach's Phone Number:	
Coach's E-mail Address:	
Utility Contact Person:	

*I understand that all hooks, belts, and hand tools furnished by me will be in a safe operating condition. Participants are responsible for their own transportation, hotel, and meal expenses in route and during the Rodeo. Participants will be required to sign a liability release before participating in the Rodeo; releasing the Rodeo sponsors and their employer from any liability should an injury occur during the Rodeo.*



**2019 Georgia Lineman's Rodeo**  
**Camp John Hope (FFA), Fort Valley, GA | May 4, 2019**

**JUDGE'S REGISTRATION FORM**

**Registration Deadline: Friday, April 12, 2019**

**One Judge is required for every 3 apprentices competing and One Judge is required for each team competing.**

*Judges should handle their own accommodations.*

Utility Name: \_\_\_\_\_ Contact: \_\_\_\_\_

Address: \_\_\_\_\_ City: \_\_\_\_\_ State: \_\_\_\_\_ Zip: \_\_\_\_\_

**Judges:** Please email this form to Charles Mathis at [CMathis@jec.coop](mailto:CMathis@jec.coop) or fax it to 706.547.5051

1.  
Name: \_\_\_\_\_ Title: \_\_\_\_\_  
Event judge in Prior Rodeos: \_\_\_\_\_  
Event Preferred: \_\_\_\_\_  
Phone: \_\_\_\_\_ Fax: \_\_\_\_\_ Shirt Size: \_\_\_\_\_  
Email: \_\_\_\_\_  
What type of line experience do you have? \_\_\_\_\_  
\_\_\_\_\_  
\_\_\_\_\_

2.  
Name: \_\_\_\_\_ Title: \_\_\_\_\_  
Event judge in Prior Rodeos: \_\_\_\_\_  
Event Preferred: \_\_\_\_\_  
Phone: \_\_\_\_\_ Fax: \_\_\_\_\_ Shirt Size: \_\_\_\_\_  
Email: \_\_\_\_\_  
What type of line experience do you have? \_\_\_\_\_  
\_\_\_\_\_  
\_\_\_\_\_

3.  
Name: \_\_\_\_\_ Title: \_\_\_\_\_  
Event judge in Prior Rodeos: \_\_\_\_\_  
Event Preferred: \_\_\_\_\_  
Phone: \_\_\_\_\_ Fax: \_\_\_\_\_ Shirt Size: \_\_\_\_\_  
Email: \_\_\_\_\_  
What type of line experience do you have? \_\_\_\_\_  
\_\_\_\_\_  
\_\_\_\_\_





**2019 Georgia Lineman's Rodeo**  
**Camp John Hope (FFA), Fort Valley, GA**  
**May 4, 2019**

**AWARDS BANQUET TICKETS**

Awards Banquet tickets are available for pre-sale or you can purchase them on-site on Friday and Saturday. Please use this form if you would like to pre-order meal tickets for Coaches, Team Support and Spectators.

Banquet tickets are included for Teams, Apprentices and Judges.

Please email this form to Charles Mathis at [CMathis@jec.coop](mailto:CMathis@jec.coop) or fax it to 706.547.5051

**NOTE: You must submit payment via the website after sending your form. [Garodeo.com](http://Garodeo.com)**

---

**Banquet Dinner Tickets**

Qty – Adult Tickets \_\_\_\_\_ @ \$25.00 each (12 and older) = \$ \_\_\_\_\_

Qty – Child Tickets \_\_\_\_\_ @ \$10.00 each (5 – 12 years) = \$ \_\_\_\_\_

**Total Enclosed \$ \_\_\_\_\_**

---

Contact Name: \_\_\_\_\_

Utility Name: \_\_\_\_\_ Phone: \_\_\_\_\_

Address: \_\_\_\_\_

City: \_\_\_\_\_ State: \_\_\_\_\_ Zip: \_\_\_\_\_

***Orders can be picked up at the registration table on Friday, May 3<sup>rd</sup> between 10:00am – 2:00pm. Please provide the name of the person who will be picking up the tickets.***

Name: \_\_\_\_\_ Utility: \_\_\_\_\_



**2019 Georgia Lineman's Rodeo**  
**Camp John Hope (FFA), Fort Valley, GA**  
**May 4, 2019**

**RODEO T-SHIRT ORDER FORM**

Please use this form if you would like to purchase rodeo gear. Shirts are included for Teams and Apprentices.

Please email this form to Charles Mathis at [CMathis@jec.coop](mailto:CMathis@jec.coop) or fax it to 706.547.5051

**NOTE: You must submit payment via the website after sending your form. [Garodeo.com](http://Garodeo.com)**

**SHORT SLEEVE**

Small	_____	\$15.00	\$ _____
Medium	_____	\$15.00	\$ _____
Large	_____	\$15.00	\$ _____
XL	_____	\$15.00	\$ _____
2 XL	_____	\$17.00	\$ _____
3 XL	_____	\$17.00	\$ _____
4 XL	_____	\$17.00	\$ _____

**LONG SLEEVE**

Small	_____	\$20.00	\$ _____
Medium	_____	\$20.00	\$ _____
Large	_____	\$20.00	\$ _____
XL	_____	\$20.00	\$ _____
2 XL	_____	\$23.00	\$ _____
3 XL	_____	\$23.00	\$ _____
4 XL	_____	\$23.00	\$ _____

**CHILDREN SHIRTS (SHORT SLEEVE ONLY)**

Youth Small	_____	\$12.00	\$ _____
Youth Medium	_____	\$12.00	\$ _____
Youth Large	_____	\$12.00	\$ _____

**HATS**

One Size	_____	\$12.00	\$ _____
----------	-------	---------	----------

**TOTAL ENCLOSED \$ \_\_\_\_\_**

**Orders can be picked up at the registration table on Friday, May 3rd between 10:00am – 2:00pm. Please provide the name of the person who will be picking up the order:**

Name: \_\_\_\_\_ Utility: \_\_\_\_\_

Phone: \_\_\_\_\_ Email: \_\_\_\_\_

# AGENDA

2019 GEORGIA LINEMAN'S RODEO



## FRIDAY, MAY 3

10:00am – 12:00pm

### JUDGES' MEETING (MANDATORY)

Judges will receive their assignments & official shirts

10:00am – 2:00pm

### VENDOR EXPO

Come check out the latest products and services.

10:00am – 2:00pm

### RODEO REGISTRATION & SALES

Registration for apprentices, teams and greeters.

12:00pm – 2:00pm

### LUNCH

## SATURDAY, MAY 4

8:00am

### OPENING CEREMONY

8:30am

### 2019 GLRA RODEO COMPETITION

8:30am

### OUTDOOR VENDOR EXPO

7:00pm

### RODEO AWARDS BANQUET (TICKETS REQUIRED)

## THANK YOU 2018 SPONSORS!

### MATERIAL SPONSORS



### PLATINUM SPONSORS





**2019 Georgia Lineman's Rodeo**  
**Camp John Hope (FFA), Fort Valley, GA**  
**May 4, 2019**

## **SPONSORSHIP OPPORTUNITIES**

### **FRIDAY LUNCH SPONSOR**

*Limited to two sponsors.*

**\$2,000**

#### **Benefits**

- Logo with hyperlink on all Rodeo pages on [www.GARodeo.com](http://www.GARodeo.com)
- Logo in the banquet program
- Logo in the 2020 Sponsorship Packet
- Signage at the sponsored luncheon
- Exhibit space at the Indoor/Outdoor Vendor Expo
- Exhibit space at the Outdoor Vendor Expo (Rodeo Field)
- Recognition from the stage at the Awards Banquet
- Logo on signs at the Awards Banquet

### **AWARDS BANQUET SPONSOR**

*Limited to two sponsors.*

**\$2,000**

#### **Benefits**

- Logo with hyperlink of all Rodeo pages on [www.GARodeo.com](http://www.GARodeo.com)
- Logo in the banquet program
- Logo in the 2020 Sponsorship Packet
- Exhibit space at the Indoor/Outdoor Vendor Expo
- Exhibit space at the Outdoor Vendor Expo (Rodeo Field)
- Recognition from the stage at the Awards Banquet
- Logo on signs at the Awards Banquet

### **SPONSORSHIP QUESTIONS:**

Kathy Ivie, GLRA  
770.266.2332  
[kivie@waltonemc.com](mailto:kivie@waltonemc.com)



## PLATINUM EVENT SPONSOR

**\$1,000**

### Benefits

- Sponsor's name on event trophies & plaques
- Sponsor's name displayed on event tent during rodeo
- Logo and web link on all Rodeo pages on [www.GARodeo.com](http://www.GARodeo.com)
- Logo in the banquet program
- Logo in the 2020 Sponsorship Packet
- Exhibit space at the Indoor/Outdoor Vendor Expo
- Premium exhibit space at the Outdoor Vendor Expo (Rodeo Field)
- Recognition from the stage at the Awards Banquet
- Logo on signs at the Awards Banquet

## JUNIOR LINEMAN SPONSOR

*Limited to one sponsor.*

**\$1,000**

### Benefits

- Sponsor's name displayed on event tent during rodeo
- Sponsor name on all Rodeo pages on [www.GARodeo.com](http://www.GARodeo.com)
- Logo in the banquet program
- Logo in the 2020 Sponsorship Packet
- Exhibit space at the Indoor/Outdoor Vendor Expo
- Exhibit space at the Outdoor Vendor Expo (Rodeo Field)
- Recognition from the stage at the Awards Banquet
- Logo on signs at the Awards Banquet



## **GOLD SPONSOR**

**\$500**

### **Benefits**

- Sponsor name on all Rodeo pages on [www.GARodeo.com](http://www.GARodeo.com)
- Sponsor name in the banquet program
- Exhibit space at the Indoor/Outdoor Vendor Expo
- Exhibit space at the Outdoor Vendor Expo (Rodeo Field)

## **SILVER SPONSOR**

**\$250**

### **Benefits**

- Sponsor name on all Rodeo pages on [www.GARodeo.com](http://www.GARodeo.com)
- Sponsor name in the banquet program

# SPONSORSHIP FORM

## 2019 GEORGIA LINEMAN'S RODEO

MAY 3-4, 2019 | CAMP JOHN HOPE, FFA



Company

Contact Name

Title

Address

City

State

Zip

Phone

Email

Website

**REGISTRATION DEADLINE IS APRIL 12, 2019**

### SPONSORSHIP LEVEL

- ☐ Friday Lunch Sponsor \$2,000
- ☐ Award Banquet Sponsor \$2,000
- ☐ Platinum Event Sponsor \$1,000
- ☐ Junior Lineman Sponsor \$1,000
- ☐ Gold Sponsor \$500
- ☐ Silver Sponsor \$250

#### Will Exhibit On:

\_\_\_\_\_ Friday

\_\_\_\_\_ Saturday

\_\_\_\_\_ Friday & Saturday

**If you're paying via credit card**, please email (cmathis@jec.coop) the completed sponsor form or fax to 706.547.5051. Please visit garodeo.com for payment.

**If you're paying via check**, please email (cmathis@jec.coop) the completed sponsor form or fax to 706.547.5051 and mail a copy of it with your payment to GLRA | 6077 Middleground Road | Louisville, GA 30434

#### Payment Methods

- ☐ Enclosed is a check payable to **Georgia Lineman's Rodeo Association**
- ☐ I am paying via credit card

**QUESTIONS?** Kathy Ivie | kivie@waltonemc.com | 770.266.2332